



WILDSUN K9 WASH

PHOTOMETRY



AYRTON
Digital Lighting



Total Flux	62419 lm (Goniometer, fan mode Stage, wide zoom)
-------------------	--

CCT White chip	5700 (±500K)
Ra White chip	92 (±2)
TLCI White chip	97
TM-30 White chip	Rf: 91.7 Rg: 99.7

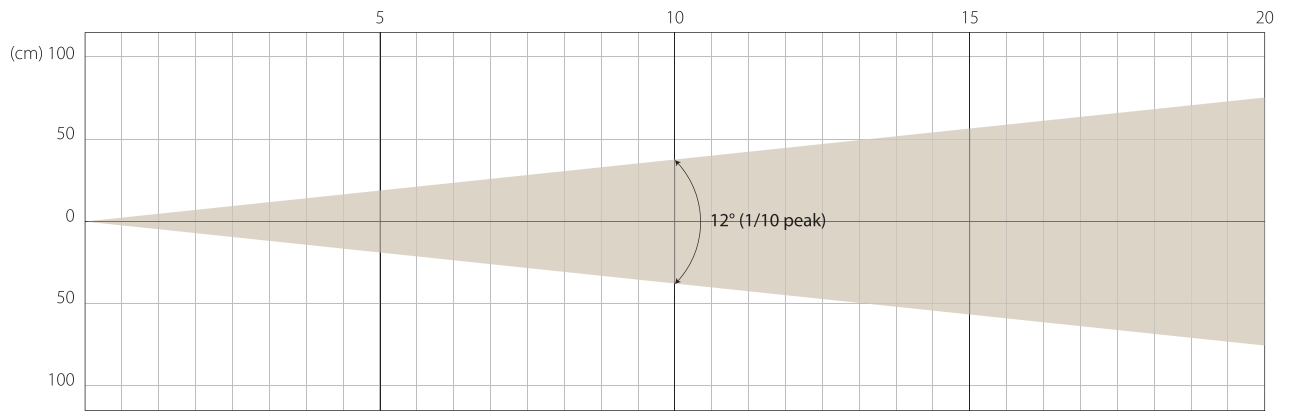
Fan Mode	Noise Level (dBA)	by Goniometer (lm)
Auto	44	59572
Stage	49	62419
Silence	38	32449
Super Silence	35	16433

Note: noise measured @1m distance, static status, ambient 31 dBA.

Voltage / Power	100-240V, 50-60Hz	1500 W
Fixture Dimension / Weight	530 x 625 x 280 mm	26.9 kg
Packing Dimension / Weight	595 x 360 x 740 mm	41 kg

MIN ZOOM

Beam Opening

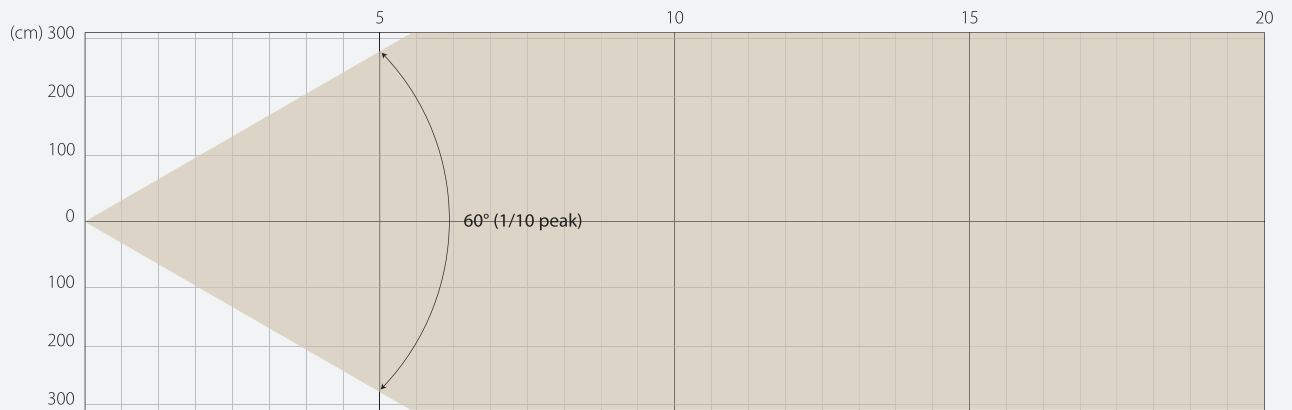


Intensity

Distance (m)	5		10		15		20	
unit	lux	diameter	lux	diameter	lux	diameter	lux	diameter
White	73115	0,35	18279	0,7	8124	1,05	4570	1,4

MAX ZOOM

Beam Opening



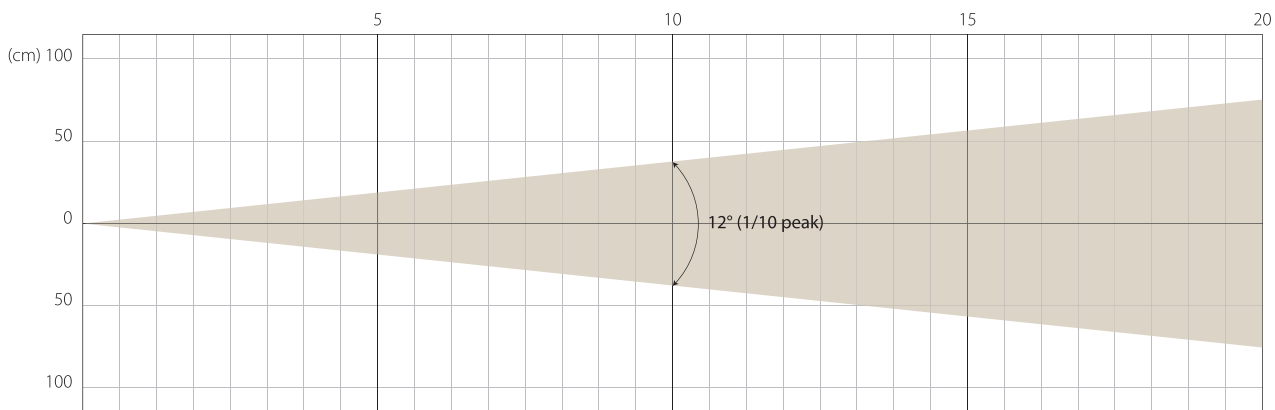
Intensity

Distance (m)	5		10		15		20	
unit	lux	diameter	lux	diameter	lux	diameter	lux	diameter
White	7337	5,54	1834	11,09	815	16,63	459	22,17

STAGE MODE

MIN ZOOM

Beam Opening

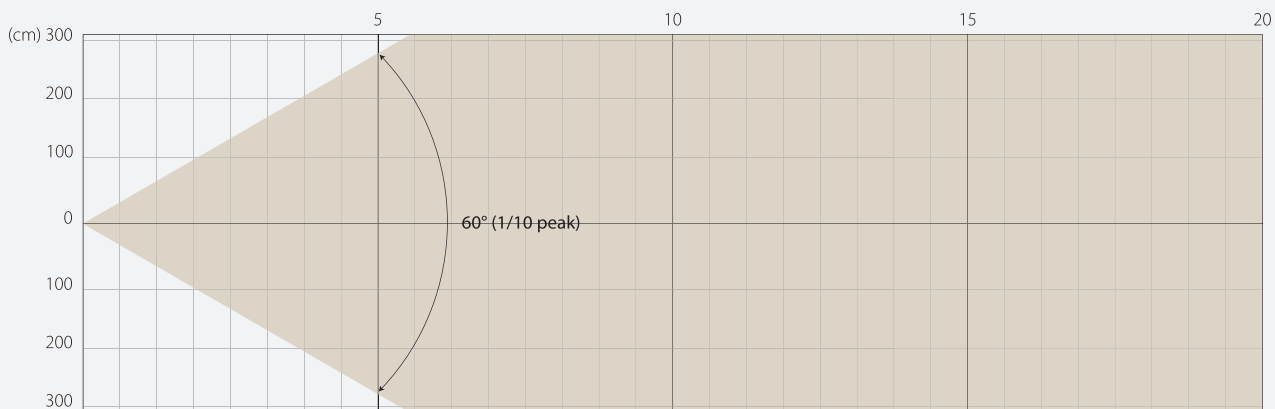


Intensity

Distance (m)	5		10		15		20	
	lux	diameter	lux	diameter	lux	diameter	lux	diameter
White	72177	0,35	18044	0,7	8020	1,05	4511	1,4

MAX ZOOM

Beam Opening

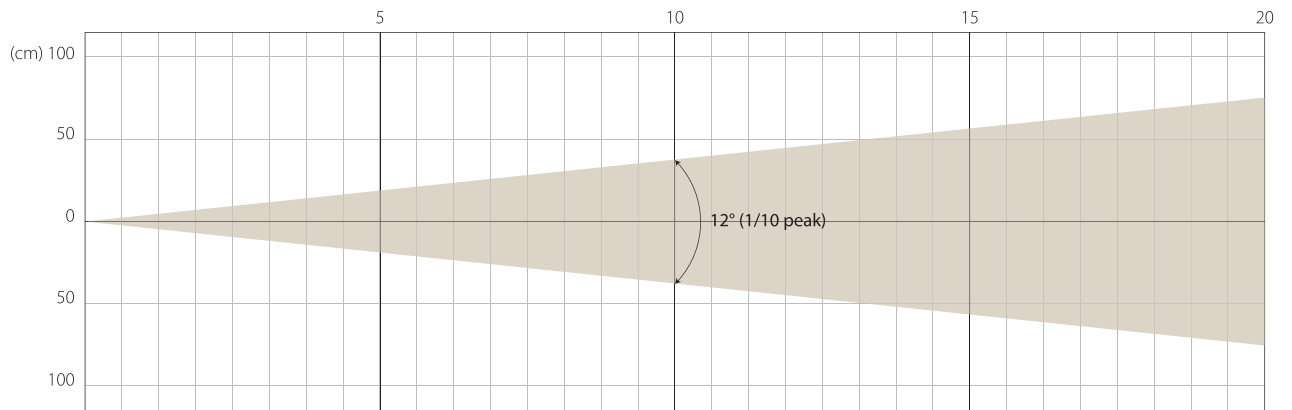


Intensity

Distance (m)	5		10		15		20	
	lux	diameter	lux	diameter	lux	diameter	lux	diameter
White	7615	5,54	1904	11,09	846	16,63	476	22,17

MIN ZOOM

Beam Opening

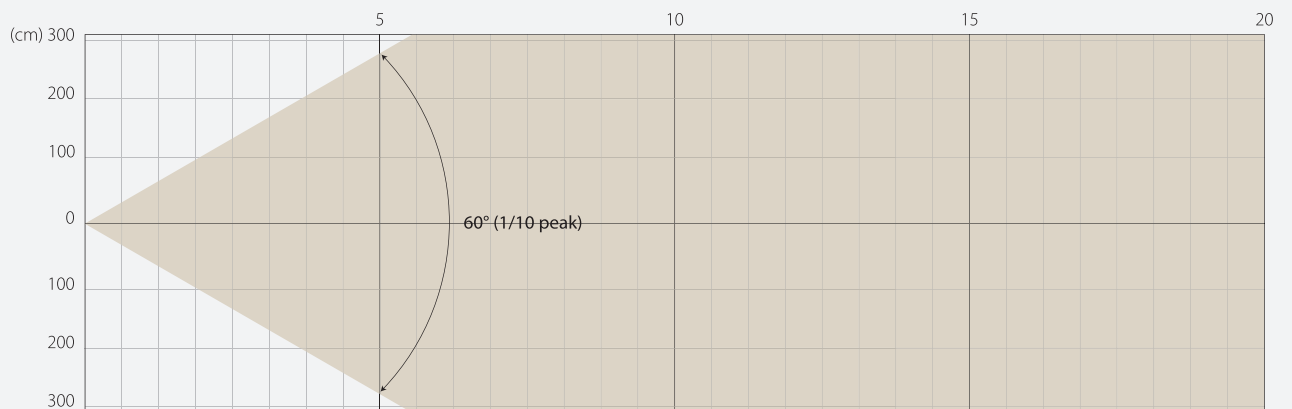


Intensity

Distance (m)	5		10		15		20	
unit	lux	diameter	lux	diameter	lux	diameter	lux	diameter
White	40515	0,35	10129	0,7	4502	1,05	2532	1,4

MAX ZOOM

Beam Opening



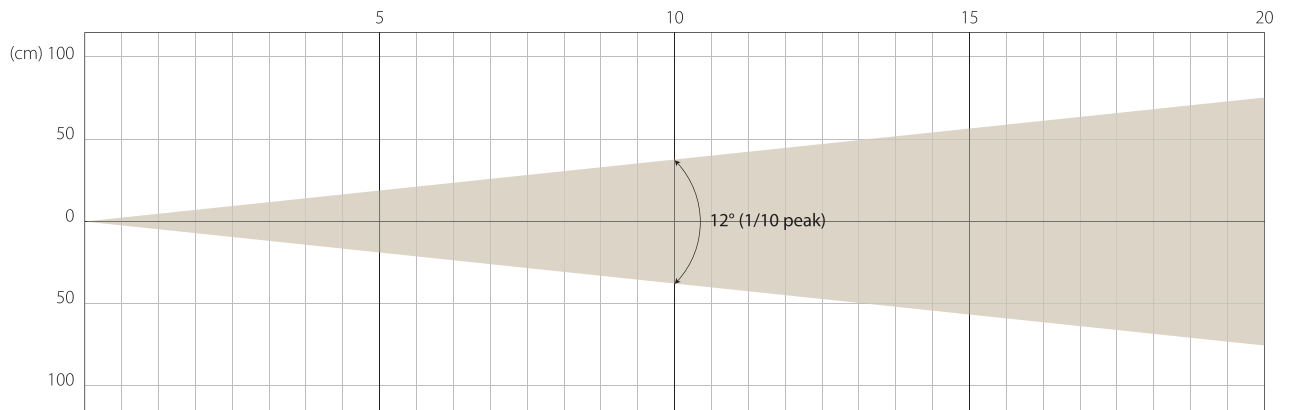
Intensity

Distance (m)	5		10		15		20	
unit	lux	diameter	lux	diameter	lux	diameter	lux	diameter
White	3922	5,54	980	11,09	436	16,63	245	22,17

SUPER SILENCE MODE

MIN ZOOM

Beam Opening

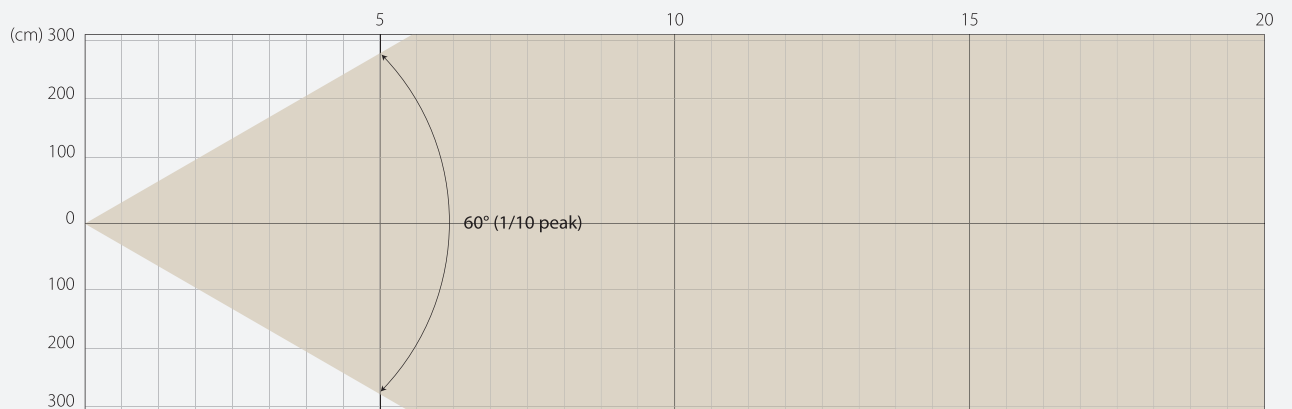


Intensity

Distance (m)	5		10		15		20	
unit	lux	diameter	lux	diameter	lux	diameter	lux	diameter
White	20553	0,35	5138	0,7	2284	1,05	1285	1,4

MAX ZOOM

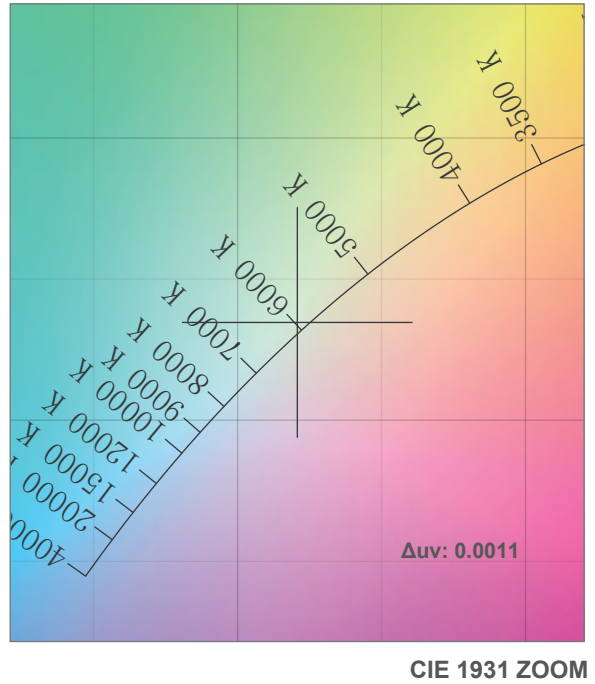
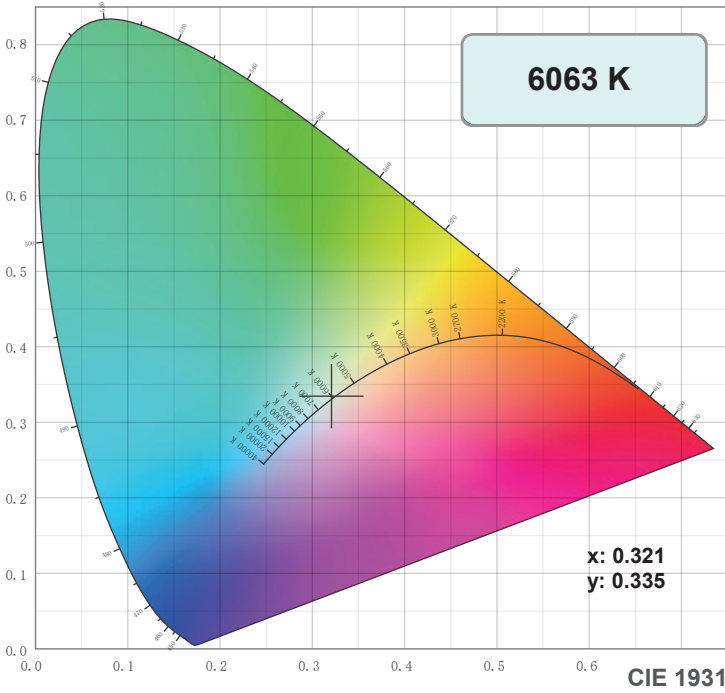
Beam Opening



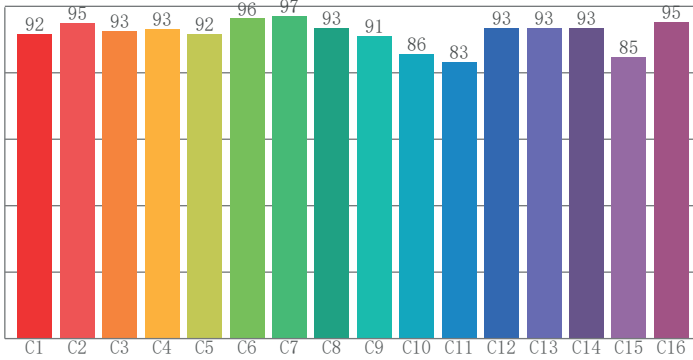
Intensity

Distance (m)	5		10		15		20	
unit	lux	diameter	lux	diameter	lux	diameter	lux	diameter
White	2001	5,54	500	11,09	222	16,63	125	22,17

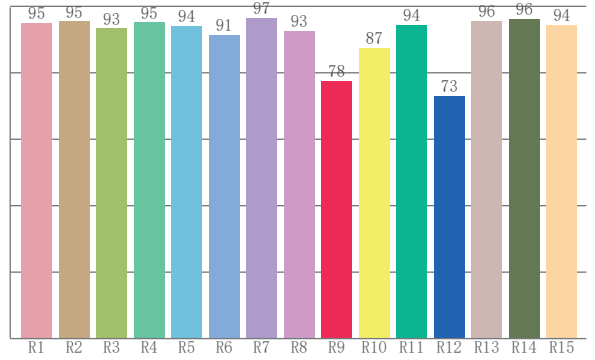
COLOR DETAILS



TM-30: 91.7



CRI: 94.2 (R1-R8)



CRI R values, only R1-R8 are used to calculate final CRI value

R1	R2	R3	R4	R5	R6	R7	R8	R9	R10	R11	R12	R13	R14	R15
95.1	95.5	93.3	95.2	94.0	91.4	96.5	92.6	77.5	87.5	94.5	73.1	95.6	96.2	94.4

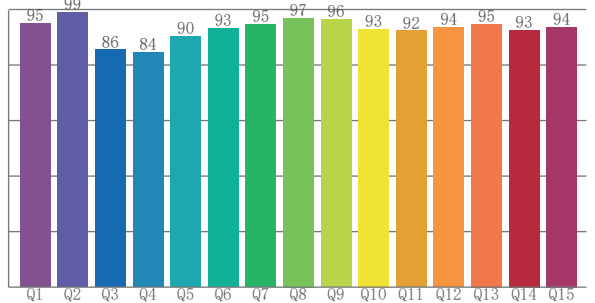
TM30 C values, 16 binned values out of total of 99 C values

C1	C2	C3	C4	C5	C6	C7	C8	C9	C10	C11	C12	C13	C14	C15	C16
91.7	95.1	92.6	93.3	91.7	96.3	97.2	93.4	91.0	85.8	83.3	93.5	93.4	93.5	84.9	95.3

CQS Q values

Q1	Q2	Q3	Q4	Q5	Q6	Q7	Q8	Q9	Q10	Q11	Q12	Q13	Q14	Q15
94.9	98.9	85.5	84.5	90.3	93.2	94.7	96.9	96.4	93.0	92.3	93.6	94.8	92.6	93.7

CQS: 92.1



Color parameters

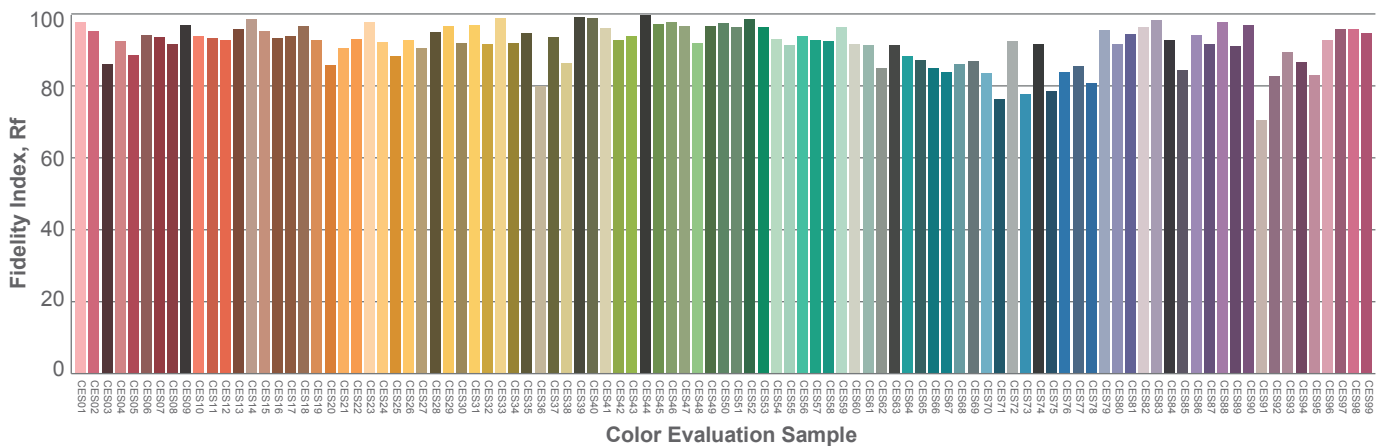
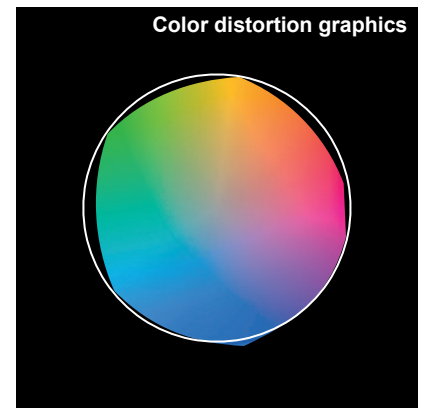
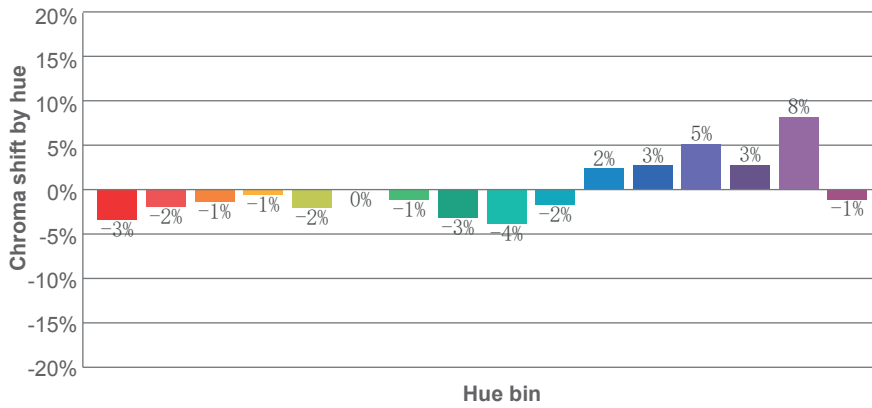
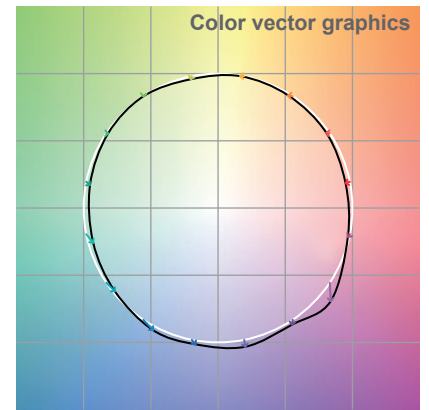
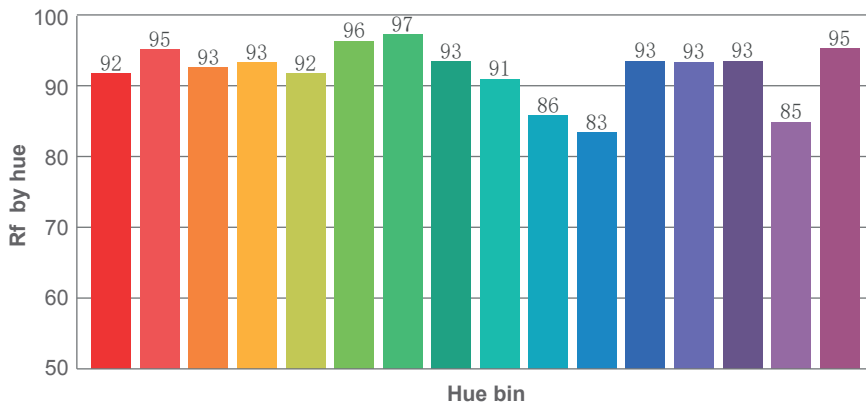
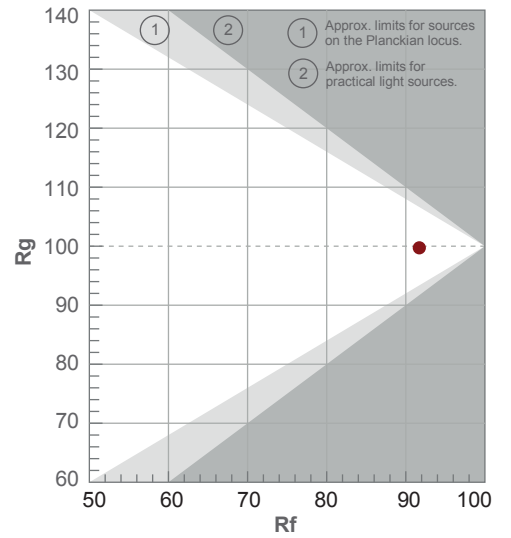
Color temperature	Color rendering index	Red component	Color fidelity	Color gamut	Color quality scale	Color coordinate cie 1931	Color coordinate cie 1931	Color coordinate	Color coordinate	Color deviation from black body
CCT	CRI	CRI R9	TM30 Rf	TM30 Rg	CQS	x	y	u	v	Δuv
6063 K	94.2	77.5	91.7	99.7	92.1	0.321	0.335	0.201	0.315	0.0011

TM-30 DETAILS

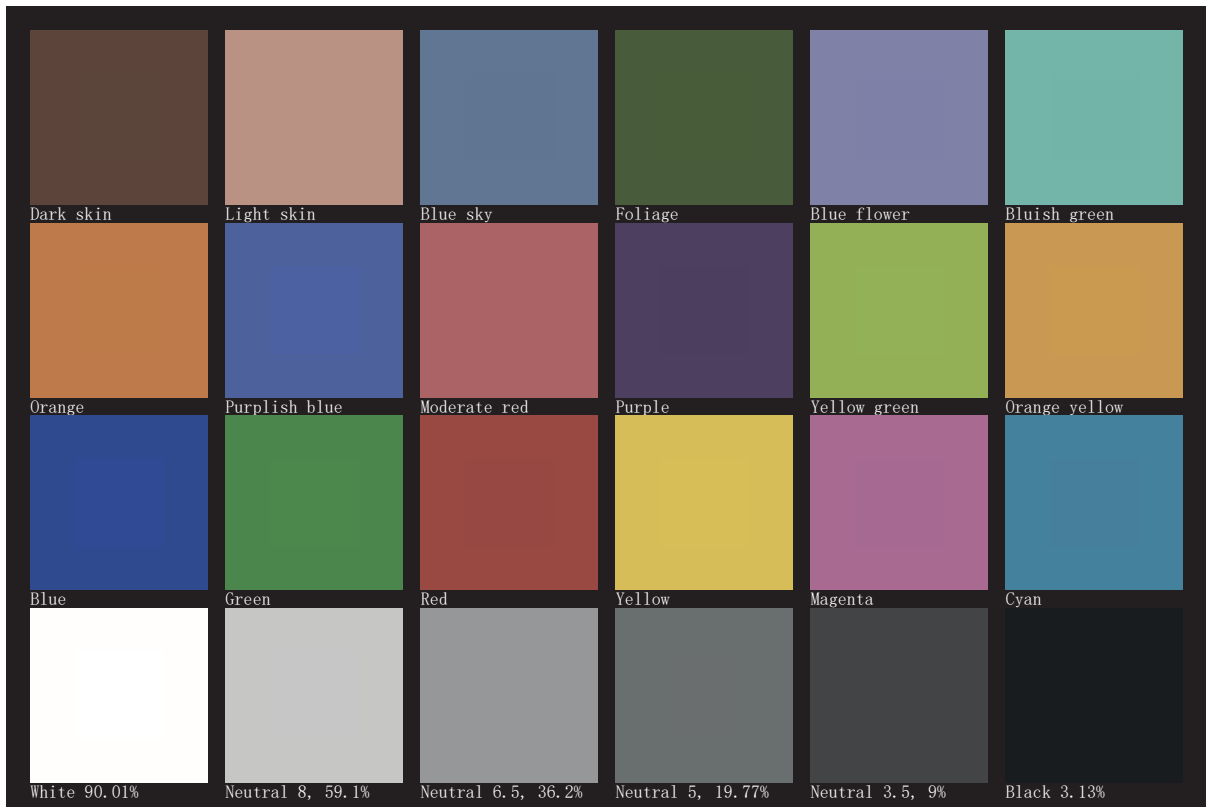
Rf 91.7
Fidelity index Rf

Rg 99.7
Gamut index Rg

Hue Bin	R _f	Shifts (%)	
		Chroma	Hue
1	92	-3%	0%
2	95	-2%	2%
3	93	-1%	3%
4	93	-1%	3%
5	92	-2%	1%
6	96	0%	0%
7	97	-1%	-1%
8	93	-3%	2%
9	91	-4%	7%
10	86	-2%	9%
11	83	2%	10%
12	93	3%	3%
13	93	5%	0%
14	93	3%	-2%
15	85	8%	-11%
16	95	-1%	-2%



TLCI 97





AYRTON

Digital Lighting