



MagicBlade Neo is a new modular fixture concept built around five independent heads, designed to expand graphic possibilities in a compact format. Inspired by MagicDot Neo, it brings together precision engineering and creative flexibility, offering a tool that can be used to build a wide range of visual effects and configurations

With its ultra-tight head spacing, continuous pan and tilt rotation, and high-definition LiquidEffect rings, MagicBlade Neo can create reconfigurable curtains of light, vortex effects, and strong volumetric looks. Its distinctive design, seamless visual lines, IP65 protection, and fluid, organic quality of light make it well suited to both creative installations and live performance environments.

★ KEY FEATURES

→ 360 Shortcut

Like MagicDot Neo, both pan and tilt are fully continuous. Within the control channels, an important feature called 360 ShortCut (360SC) allows movement to be limited to just 360 degrees. This makes it possible to create indexable, continuous, loopable effects without flips or interruptions.

→ Grids and Lines

Minimal spacing between the heads allows arrangements that were previously impossible. Each light source can be individually controlled, opening up endless creative possibilities. The bars have also been designed to align seamlessly from one unit to the next, creating an uninterrupted line of light.

→ Beam Priority: High-Contrast, Bright, and Narrow

With MagicDot Neo, the design priority was clear: to create a bright, high-contrast beam with strong definition at narrow zoom angles. This was essential for producing impactful aerial effects.

→ Unrestricted Movement

MagicBlade Neo builds on the cylindrical design of MagicDot Neo, aligning five heads on a single bar. As a result, it offers full, continuous rotation in both pan and tilt, giving designers far greater creative freedom than traditional wave effects alone.

→ The Liquid Effects

The High-Definition Liquid Effect integrates 60 RGB LEDs around the central beam. The density of these individual LEDs creates hypnotic, multicoloured effects that feel fluid and organic, giving lighting designers a powerful tool for adding dynamic visual texture to a show.

TECHNICAL SPECIFICATIONS

SOURCE	
Engine	RGB-L High-Power LED sources
LED Watts	120 W (total fixture use, see Electrical section)
LED Engine Life (L70)	Up to 40,000 hours
LED Refresh Rate	1.2 kHz, 2.4 kHz, 16 kHz, 25 kHz
Dimming	Electronic
Dimming Curves	Square & Linear
Dimming Control Options	Auto on/off dimmer smoothing when Snap effects
Strobe Speed	1-25 Hz Per Second
Strobe Modes	Strobe Effects / Pulse Effects / Random Effects

ELECTRICAL	
Max Power Consumption	800 W
Standby Consumption	99 W@ 220 V
Voltage Range	100-240 V 50-60 Hz
Current (Max)	8 A @ 90V
Inrush (Half Cycle)	110 V : 10.4 A / 230 V : 9.2 A
Maximum Current available at the output	12 A
Connector	PowerCon RRAC3M-X-010
Power Supply Unit	Active PFC
Contains Battery	N/A

TYPICAL POWER AND CURRENT	
120V , 60Hz	699W / 5.856A / 0.996
208V, 60Hz	690W / 3.356A / 0.977
230V, 50Hz	685W / 3.065A / 0.972
240V, 50Hz	684W / 2.936A / 0.970

Suitable disclaimer nominal, etc

OPTICAL PERFORMANCE	
Lens Size	100 mm (3.94 in)
Zoom Range	3° to 30°
Zoom Ratio	10:1
Gate Size	N/A

MOVEMENT		
Pan Range	Infinite	
Pan Speed (End to End or range)	180°	329.6 rpm
	360°	410.2 rpm
	EtoE	410.2 rpm
Tilt Range	Infinite	
Tilt Speed (End to End or range)	180°	314.6 rpm
	360°	410.2rpm
	EtoE	392.5 rpm
Resolution	16-bit	
Calibration Time	29.9 sec	
Position Correction System	Yes / Automatic repositioning	
Follow Spot Modes	N/A	

COLOUR SYSTEM	
Colour System(s)	RGB-L with 4.29 billions colours
Control	RGB-L 16-bit
CTO	Virtual Wheel 2700 to 8000 K
Variable CTP	Virtual +/- Green (Tint)
Colour Wheel	N/A
Colour Wheel Effects	N/A

GOBOS	
Indexing Wheel	N/A
Indexing Gobos	N/A
Gobo Diameter (Index)	N/A
Image Diameter (Index)	N/A
Static Wheel	N/A
Static Gobos	N/A
Gobo Diameter (Fix)	N/A
Image Diameter (Fix)	N/A
Gobo Thickness	N/A
Animation Wheel	N/A
Animation Details	N/A

TECHNICAL SPECIFICATIONS

PERFORMANCE

The luminous flux values above are per head. Testing with five heads lit simultaneously cannot be performed.

LED engine output (Sphere)	5,000 lm (Fan Mode Stage)	
Fixture output (Sphere) <i>For one head</i>	2,700 lm (Fan Mode Auto)	
	3,000 lm (Fan Mode Stage)	
	2,200 lm (Fan Mode Silence)	
	1,600 lm (Fan Mode Super Silence)	
Fixture Output (Goniometer)	1,500 lm (Fan Mode Auto)	
Field Lumens (Goniometer) <i>For one head</i>	Narrow	1,300 lm
	Middle	1,420 lm
	Wide	1,500 lm
Lumen Per Watt (LPW) Max fixture output / 230 V Typical Power	22	

Test with 6500 K Color preset CTC channel @ 15/255

CCT	6500 K ± 100 K
Ra @ open	75 (±2)
Δ uv	0.006
CRI	< 86
Tm30	Rf: 80.9 Rg: 116
TLCI	66
CQS	86.7

IMAGING

Framing	N/A
Framing Rotation	N/A
Iris	N/A
Frost	N/A
Effect	<ul style="list-style-type: none"> Built-in pattern effects with speed and fade controls for scenic applications LiquidEffect with 60 individual pixels

CONNECTORS

Power	In/Thru powerCON True 1 TOP
DMX	In/Thru 5 Pin XLR
Network	In/Thru RJ45
Wireless	DMX Only

CONTROL

DMX Control	DMX (USITT DMX-512-A) RDM (ANSI/ESTA E1.20)
Transceiver/Receiver	RS-485 with Opto Isolation
DMX Modes	2 User Mode (Extended, EXT CHS)
Channel Count	Extend-175, EXT CHS-184
DMX Chart	Scan the QR code on page 5
Network Protocols	ArtNet & sACN
Local Control	Colour LCD Panel 5 Menu Buttons NFC
Stand Alone Mode	Main/Follow, presets 250
RDM Functions	Yes
Wireless DMX	CRMX TiMo RDM receiver
E-Sim Ready	Optional
USB Port	No

THERMAL

Max Surface Temperature, steady state, at Ta 40°	85°C (185°F)
Max Ambient Temperature (Ta Max)	45°C (113°F)
Min Ambient Temperature (Ta Min)	-20°C (-4°F)
Total Heat Dissipation (Calculated +/- 10%)	2385 BTU/H 699 W @ 110 V 2337 BTU/H 685 W @ 230 V
Minimum to illuminated surface	3 m (9.84 ft)
Minimum to combustible surface	0.5 m (1.64 ft)
Thermal Protection system	Yes
Cooling modes	See Acoustics
Cooling System	Advanced Liquid Cooling

TECHNICAL SPECIFICATIONS

ACOUSTICS STATIC

Fan Mode	dBA ²	NC ³
Auto	44.9 dBA	34
Stage	51.9 dBA	41
Silence/Studio	32.4 dBA	21
Super Silence	26.8 dBA	16

DYNAMIC

Mode	dBA ²	NC ³
Auto	48.8 dBA	39
Stage	47.6 dBA	41
Silence/Studio	44.9 dBA	38
Super Silence	43.8 dBA	37

2. Measured @ 1m Static, 10 dBA ambient

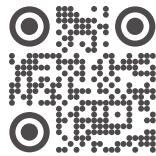
3. Noise Criterion

https://www.engineeringtoolbox.com/nc-noise-criterion-d_517.html

ENVIRONMENTAL

IP Rating	IP 65
Salt Spray Testing	Pending
Estimated embodied carbon including: <ul style="list-style-type: none"> ▪ A1 - Raw materials of fixture and packaging ▪ A3 - Product manufacturing 	TBA
Recycling options	Packaging fully recycled and widely recyclable
SIP Optional	Yes

Our Environmental Commitment



3. Up to 92%

WARRANTY

Fixture	2 years
LED Engine	2 years

From date of invoice

INSTALLATION

Orientation	Any
Mounting attachments	<ul style="list-style-type: none"> ▪ Fastening brackets system: Two Omega ¼ turn brackets designed for use with standard clamps ▪ Mounting points: Eight ¼ turn locking fittings allowing installation of Omega brackets on luminaire ▪ Safety cable attachment point
Installation version	TBC

CONSTRUCTION

Colour	Carbon Black Standard Custom colours on request
Housing	ABS PC (V0 class) and die-cast aluminium
Materials	<ul style="list-style-type: none"> ▪ Moving-head skeleton made of aluminium and steel metal plates ▪ Base in die-cast aluminium ▪ Heatsinks in aluminium and copper

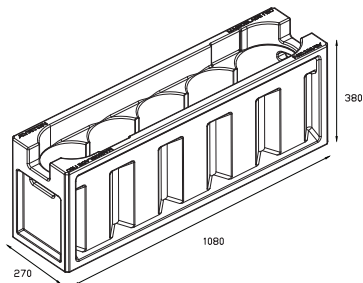
INCLUDED ITEMS

Manual	1
OMEGA brackets with quarter-turn locks	2 x 4 point brackets
Cables	<ul style="list-style-type: none"> ▪ IP65: 1.5 m powerCON True1 TOP Tails Bared End ▪ IP66: Tails Bared End
Other accessories	N/A

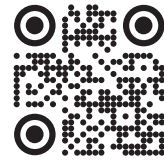
TECHNICAL SPECIFICATIONS
PHYSICAL

Fixture	
Length	1008 mm (39.69 in)
Height	352.5 mm (13.88 in)
Depth	200 mm (7.87 in)
Weight	32.4 kg (70.55 lb)
IP65	
Length	1008 mm (39.69 in)
Height	352.5 mm (13.88 in)
Depth	200 mm (7.87 in)
Weight	32.4 kg (70.55 lb)
IP66	
Length	1008 mm (39.69 in)
Height	352.5 mm (13.88 in)
Depth	200 mm (7.87 in)
Weight	32.4 kg (70.55 lb)
Shipping Dimensions	
Length	1009 mm (39.72 in)
Height	450 mm (17.72 in)
Depth	280 mm (11.02 in)
Weight	43.4 kg (94.79 lb)
In SIP Dimensions	
Length	1080 mm (42.52 in)
Height	380 mm (14.96 in)
Depth	270 mm (10.63 in)
Weight (excl fixture)	11 kg (24.25 in)

SIP Drawing


SUPPORTING DOCUMENTS

Manual
GDTF Profile
IES Files
DMX Chart
Photometric File
Software
Warranty


COMPLIANCE

EU (EMC & LVD)	<ul style="list-style-type: none"> • EMC Directive 2014/30/EU • LVD Directive 2014/35/EU
US (Safety & EMC)	<ul style="list-style-type: none"> • UL 1573 • FCC Part 15, Subpart B:2023
Substance Regulations	<ul style="list-style-type: none"> ▪ RoHS ▪ REACH ▪ CP65
Declarations	Scan the QR code above

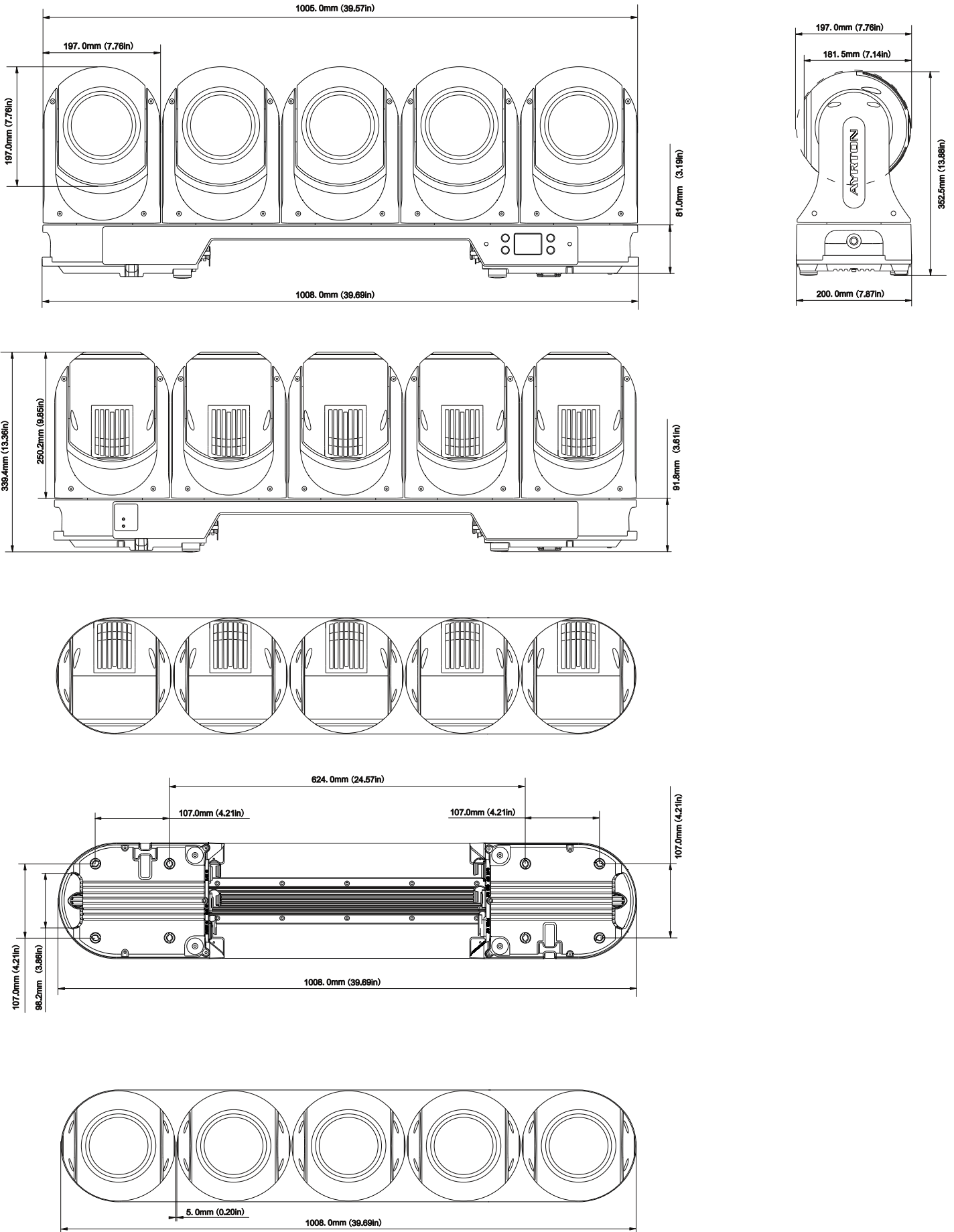
ORDERING DETAILS

MagicBlade Neo	015380
-----------------------	--------

ACCESORIES

Lynx Control	045130
---------------------	--------

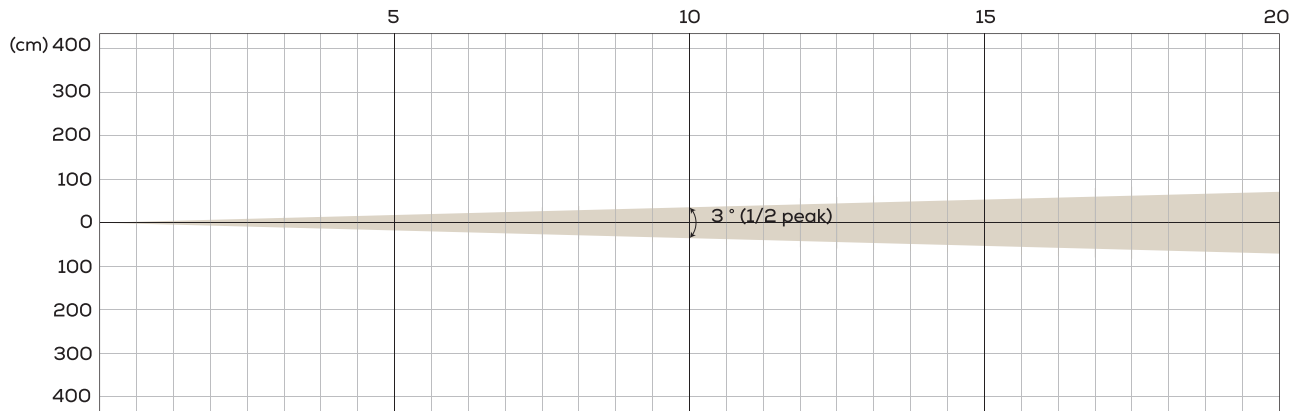
TECHNICAL SPECIFICATIONS



AUTO MODE: PHOTOMETRIC DETAIL / VALUE FOR ONE HEAD

MIN ZOOM

BEAM OPENING

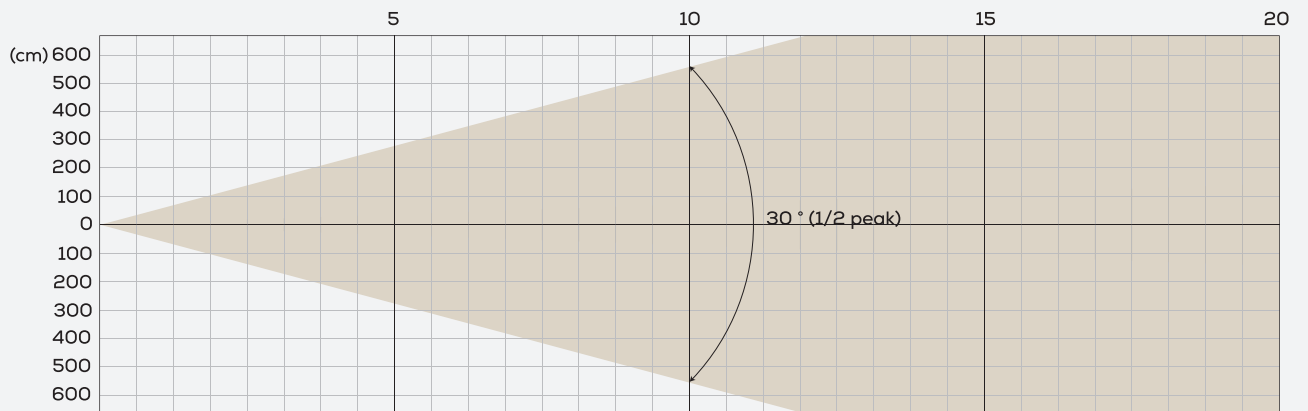


INTENSITY

Distance (m)	5		10		15		20	
	lux	diameter	lux	diameter	lux	diameter	lux	diameter
Red	2,941	0.35	735	0.7	368	1.05	184	1.4
Green	6,228	0.35	1,557	0.7	779	1.05	389	1.4
Blue	865	0.35	216	0.7	108	1.05	54	1.4
Lime	10,380	0.35	2,595	0.7	1,298	1.05	649	1.4
RGB-L	17,300	0.35	4,325	0.7	2,163	1.05	1,081	1.4

MAX ZOOM

BEAM OPENING



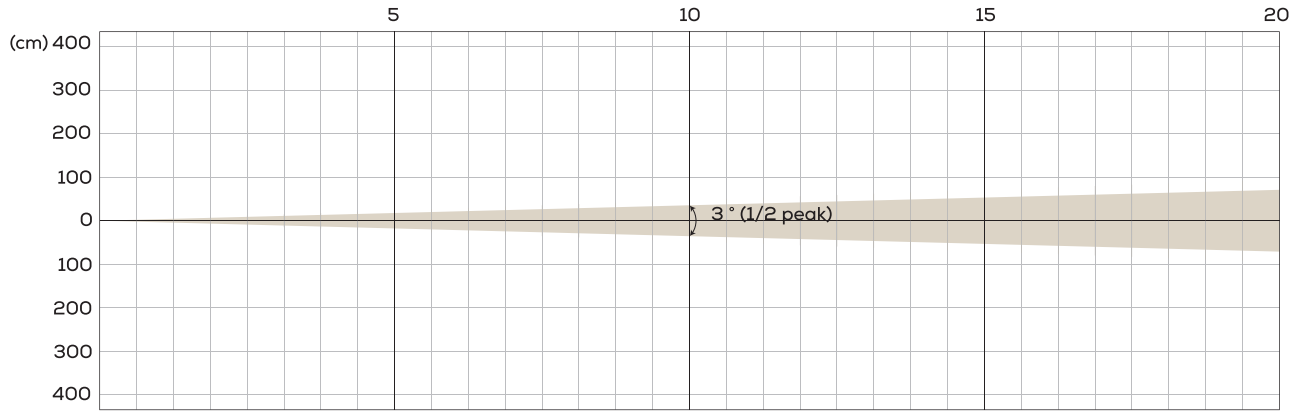
INTENSITY

Distance (m)	5		10		15		20	
	lux	diameter	lux	diameter	lux	diameter	lux	diameter
Red	71	5.54	18	11.09	9	16.63	4	22.17
Green	151	5.54	38	11.09	19	16.63	9	22.17
Blue	21	5.54	5	11.09	3	16.63	1	22.17
Lime	252	5.54	63	11.09	32	16.63	16	22.17
RGB-L	420	5.54	105	11.09	53	16.63	26	22.17

STAGE MODE: PHOTOMETRIC DETAIL / VALUE FOR ONE HEAD

MIN ZOOM

BEAM OPENING

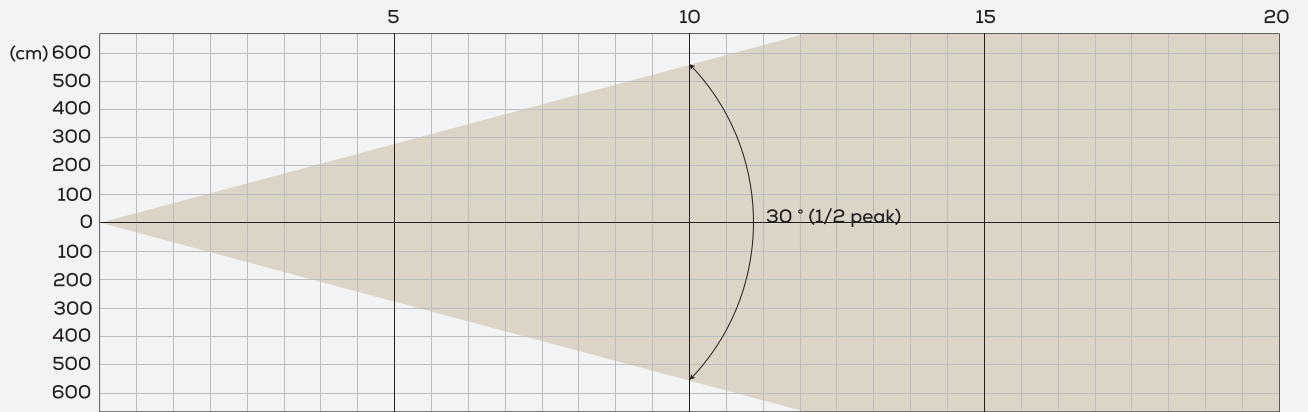


INTENSITY

Distance (m)	5		10		15		20	
	lux	diameter	lux	diameter	lux	diameter	lux	diameter
Red	3,332	0.35	833	0.7	417	1.05	208	1.4
Green	7,056	0.35	1,764	0.7	882	1.05	441	1.4
Blue	980	0.35	245	0.7	123	1.05	61	1.4
Lime	11,760	0.35	2,940	0.7	1,470	1.05	735	1.4
RGB-L	19,600	0.35	4,900	0.7	2,450	1.05	1,225	1.4

MAX ZOOM

BEAM OPENING



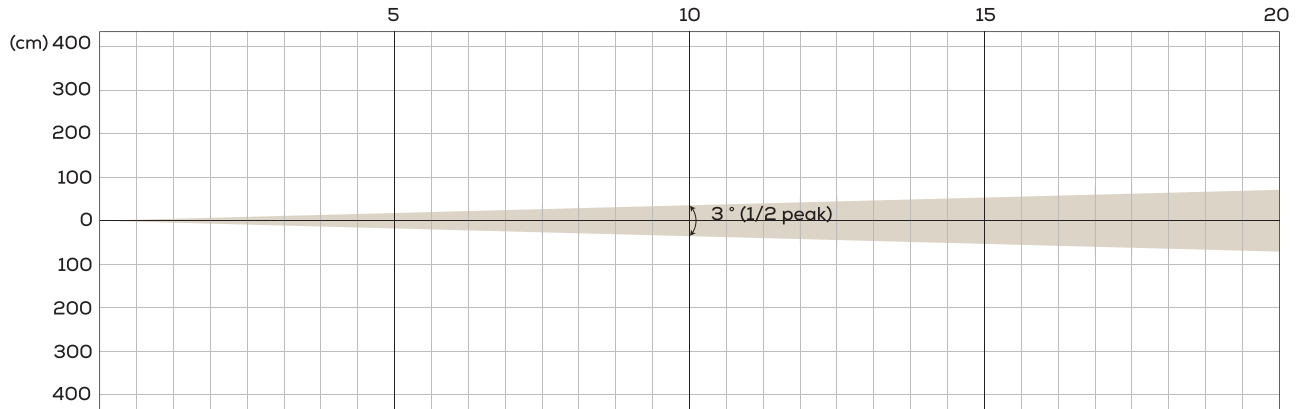
INTENSITY

Distance (m)	5		10		15		20	
	lux	diameter	lux	diameter	lux	diameter	lux	diameter
Red	81	5.54	20	11.09	10	16.63	5	22.17
Green	171	5.54	43	11.09	21	16.63	11	22.17
Blue	24	5.54	6	11.09	3	16.63	2	22.17
Lime	285	5.54	71	11.09	36	16.63	18	22.17
RGB-L	475	5.54	119	11.09	59	16.63	30	22.17

SILENCE MODE: PHOTOMETRIC DETAIL / VALUE FOR ONE HEAD

MIN ZOOM

BEAM OPENING

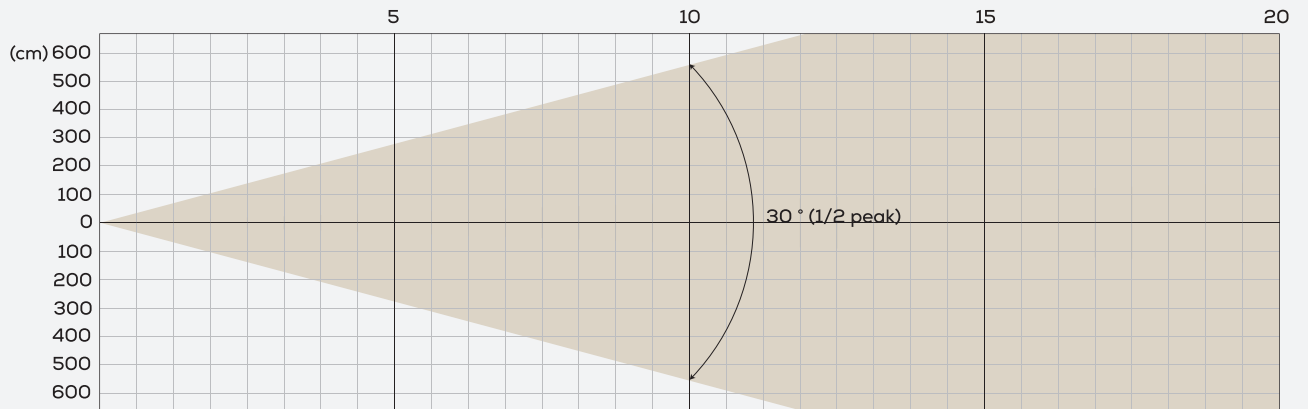


INTENSITY

Distance (m)	5		10		15		20	
	lux	diameter	lux	diameter	lux	diameter	lux	diameter
Red	2,414	0.35	604	0.7	302	1.05	151	1.4
Green	5,112	0.35	1,278	0.7	639	1.05	320	1.4
Blue	710	0.35	178	0.7	89	1.05	44	1.4
Lime	8,520	0.35	2,130	0.7	1,065	1.05	533	1.4
RGB-L	14,200	0.35	3,550	0.7	1,775	1.05	888	1.4

MAX ZOOM

BEAM OPENING



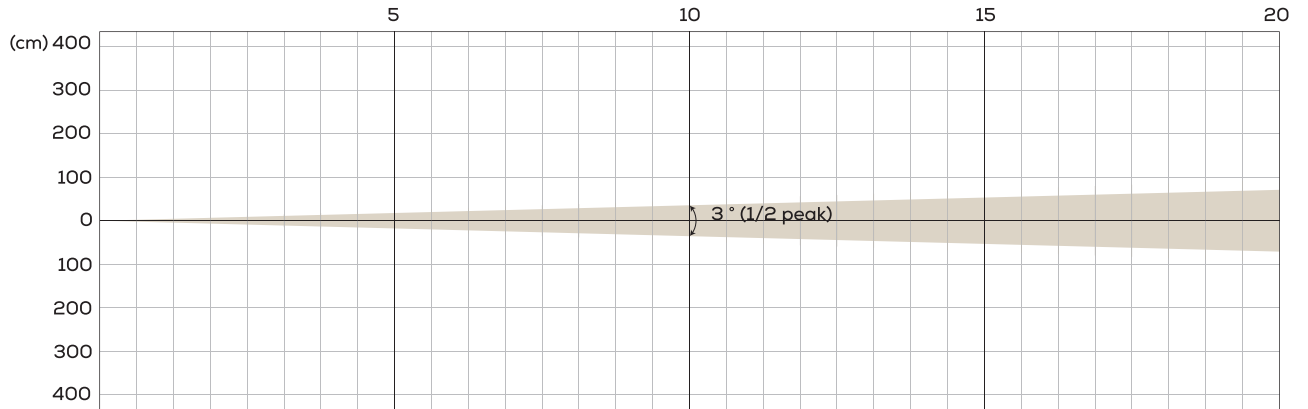
INTENSITY

Distance (m)	5		10		15		20	
	lux	diameter	lux	diameter	lux	diameter	lux	diameter
Red	58	5.54	15	11.09	7	16.63	4	22.17
Green	124	5.54	31	11.09	16	16.63	8	22.17
Blue	17	5.54	4	11.09	2	16.63	1	22.17
Lime	206	5.54	52	11.09	26	16.63	13	22.17
RGB-L	344	5.54	86	11.09	43	16.63	22	22.17

SUPER SILENCE MODE: PHOTOMETRIC DETAIL / VALUE FOR ONE HEAD

MIN ZOOM

BEAM OPENING

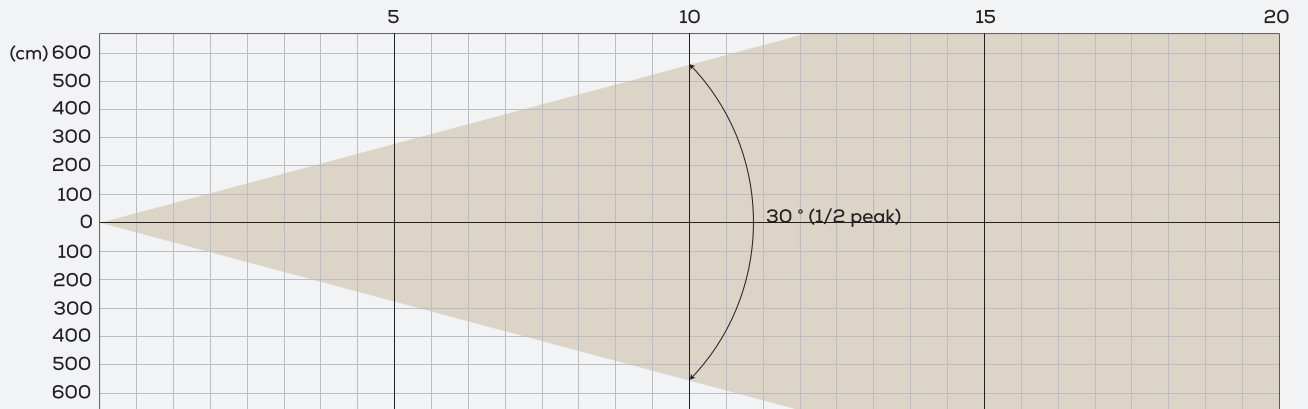


INTENSITY

Distance (m)	5		10		15		20	
	lux	diameter	lux	diameter	lux	diameter	lux	diameter
Red	1,938	0.35	485	0.7	242	1.05	121	1.4
Green	4,104	0.35	1,026	0.7	513	1.05	257	1.4
Blue	570	0.35	143	0.7	71	1.05	36	1.4
Lime	6840	0.35	1,710	0.7	855	1.05	428	1.4
RGB-L	11,400	0.35	2,850	0.7	1425	1.05	713	1.4

MAX ZOOM

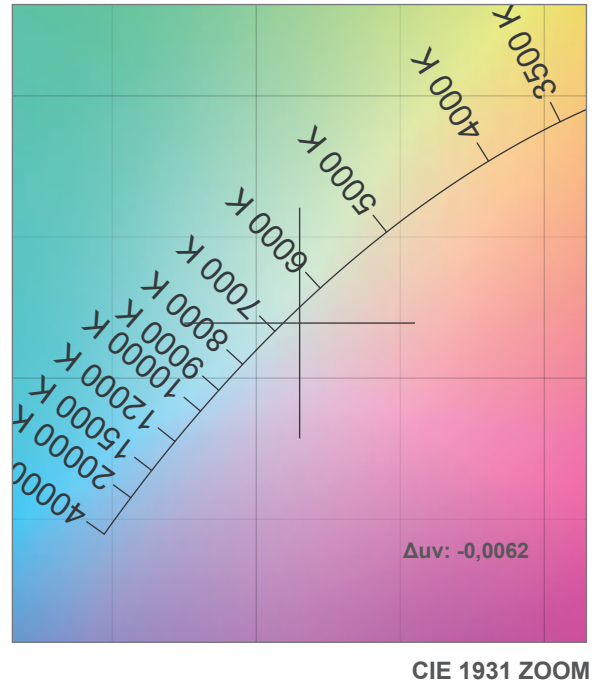
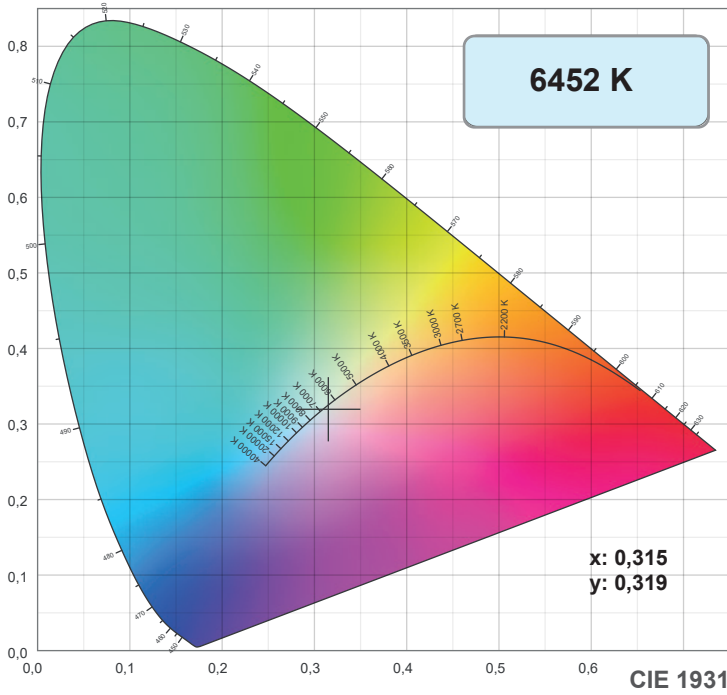
BEAM OPENING



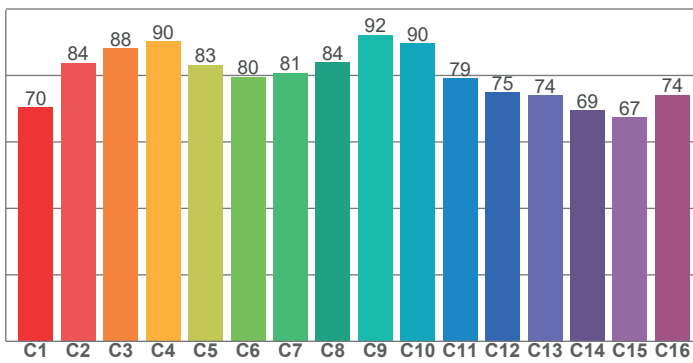
INTENSITY

Distance (m)	5		10		15		20	
	lux	diameter	lux	diameter	lux	diameter	lux	diameter
Red	47	5.54	12	11.09	6	16.63	3	22.17
Green	100	5.54	25	11.09	13	16.63	6	22.17
Blue	14	5.54	4	11.09	2	16.63	1	22.17
Lime	166	5.54	42	11.09	21	16.63	10	22.17
RGB-L	277	5.54	69	11.09	35	16.63	17	22.17

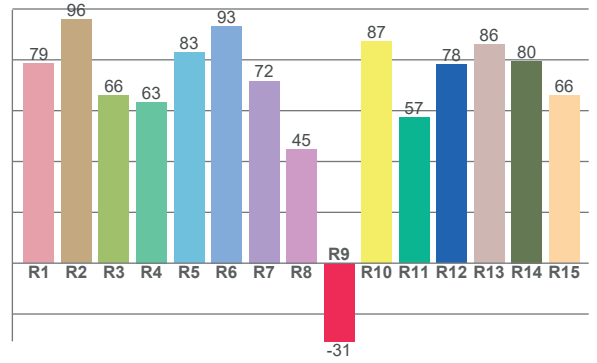
COLOUR PARAMETERS / VALUE FOR ONE HEAD



TM-30: 80,9



CRI: 74,6 (R1-R8)



CRI R values, only R1-R8 are used to calculate final CRI value

R1	R2	R3	R4	R5	R6	R7	R8	R9	R10	R11	R12	R13	R14	R15
78,5	95,8	66,0	63,4	82,8	93,3	71,7	44,9	-30,7	87,4	57,3	78,1	86,1	79,5	66,1

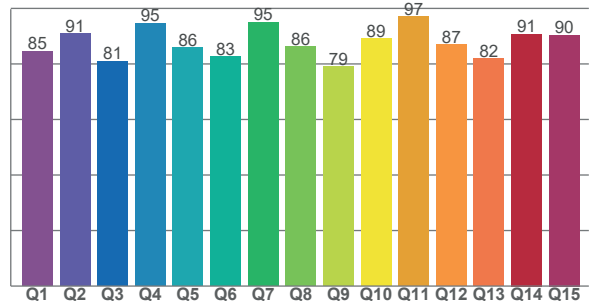
TM30 C values, 16 binned values out of total of 99 C values

C1	C2	C3	C4	C5	C6	C7	C8	C9	C10	C11	C12	C13	C14	C15	C16
70,4	83,8	88,1	90,3	83,1	79,6	80,7	84,0	92,1	89,7	79,0	74,9	74,0	69,5	67,3	74,1

CQS Q values

Q1	Q2	Q3	Q4	Q5	Q6	Q7	Q8	Q9	Q10	Q11	Q12	Q13	Q14	Q15
84,5	90,9	80,9	94,7	85,9	82,6	95,0	86,3	78,9	89,2	96,9	87,0	81,9	90,8	90,4

CQS: 86,7



Color parameters

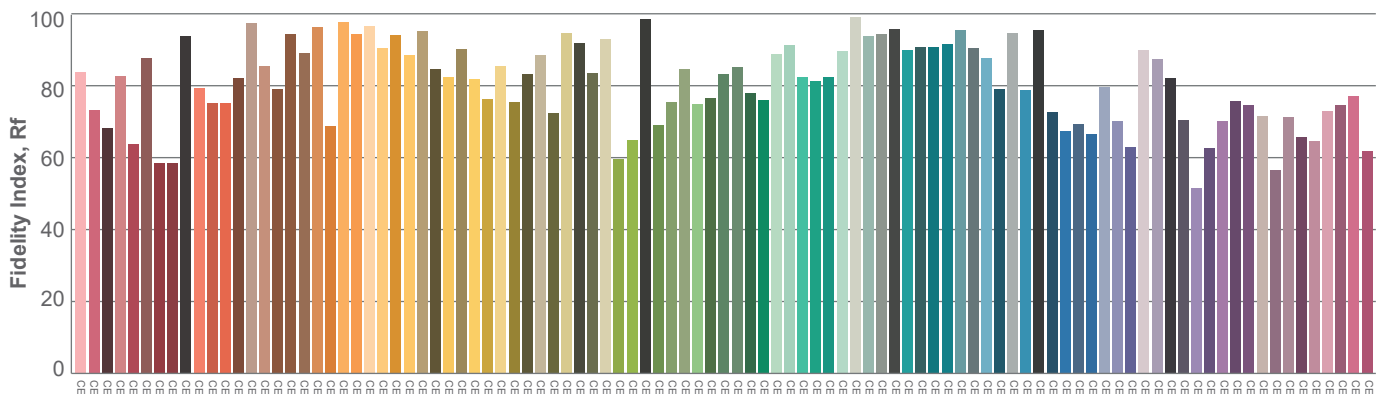
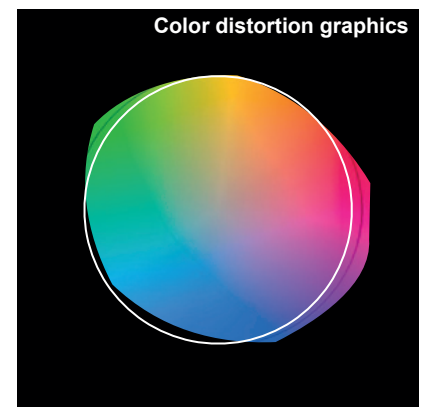
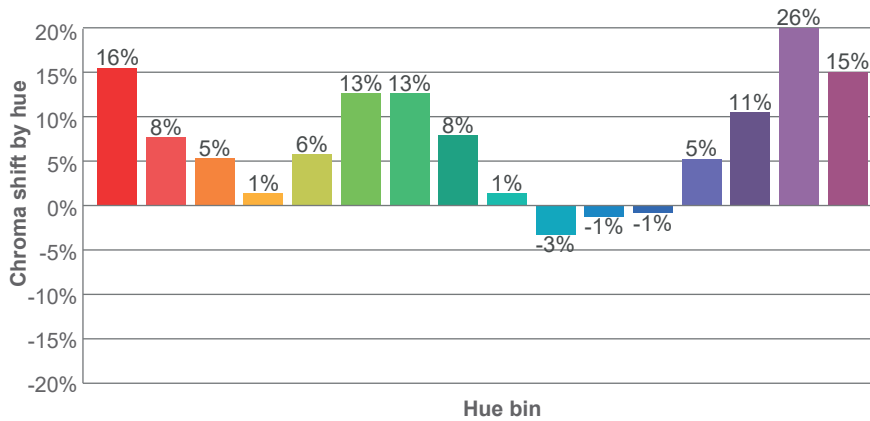
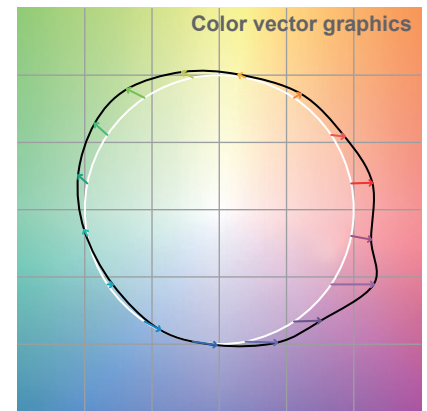
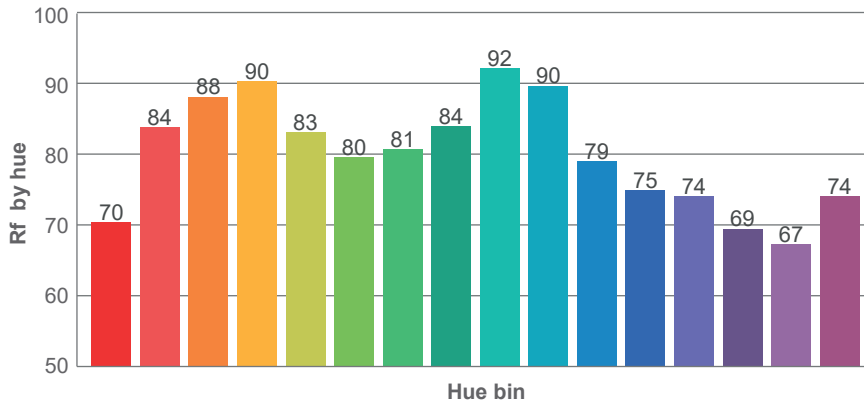
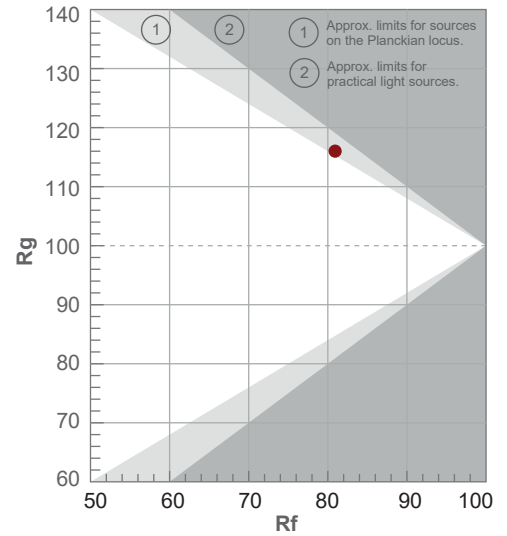
Color temperature	Color rendering index	Red component	Color fidelity	Color gamut	Color quality scale	Color coordinate cie 1931	Color coordinate cie 1931	Color coordinate	Color coordinate	Color diviation from black body
CCT	CRI	CRI R9	TM30 Rf	TM30 Rg	CQS	x	y	u	v	Δuv
6452 K	74,6	-30,7	80,9	116,0	86,7	0,315	0,319	0,203	0,309	-0,0062









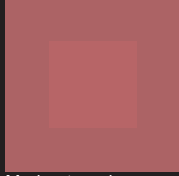
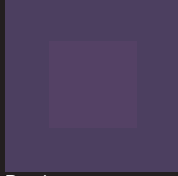


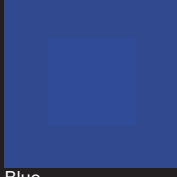

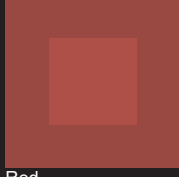

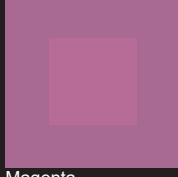
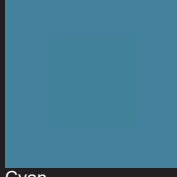
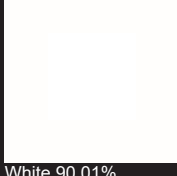
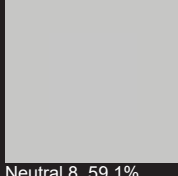
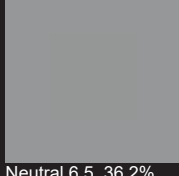
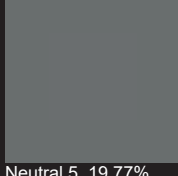
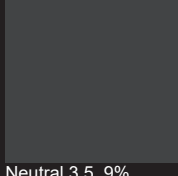
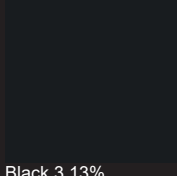
TM-30 / VALUE FOR ONE HEAD

Rf 80,9
Fidelity index Rf

Rg 116,0
Gamut index Rg

Hue Bin	R _f	Shifts (%)	
		Chroma	Hue
1	70	16%	-3%
2	84	8%	-7%
3	88	5%	-3%
4	90	1%	6%
5	83	6%	7%
6	80	13%	7%
7	81	13%	-2%
8	84	8%	-5%
9	92	1%	-5%
10	90	-3%	2%
11	79	-1%	13%
12	75	-1%	18%
13	74	5%	23%
14	69	11%	17%
15	67	26%	18%
16	74	15%	0%



					
Dark skin	Light skin	Blue sky	Foliage	Blue flower	Bluis green
					
Orange	Purplish blue	Moderate red	Purple	Yellow green	Orange yellow
					
Blue	Green	Red	Yellow	Magenta	Cyan
					
White 90.01%	Neutral 8, 59.1%	Neutral 6.5, 36.2%	Neutral 5, 19.77%	Neutral 3.5, 9%	Black 3.13%

⚠️ DISCLAIMER

Errors and omissions for all information given in this specification sheet are possible. All information is subject to change without prior notice.