



MAGICBLADE NEO

PHOTOMETRY



AYRTON

Digital Lighting



Total Flux	15,000 lm (Sphere, fan mode Stage, wide zoom)
-------------------	---

CCT balanced white (CTC channel at 15/255)	6500 (±100 K)
---	---------------

Ra balanced white (CTC channel at 15/255)	75 (±2)
--	---------

TLCI balanced white (CTC channel at 15/255)	66
--	----

TM-30 balanced white (CTC channel at 15/255)	Rf: 80.9 Rg: 116
---	------------------

Fan Mode	Noise Level (dBA)	by Goniometer (lm)	by Sphere (lm)
Auto	44	7500	13500
Stage	47	8500	15000
Silence	37	6125	11000
Super Silence	34	5000	8000

Note: noise measured @1m distance, static status, ambient 10 dBA.

Voltage / Power	100-240 V, 50-60 Hz	800 W
------------------------	---------------------	-------

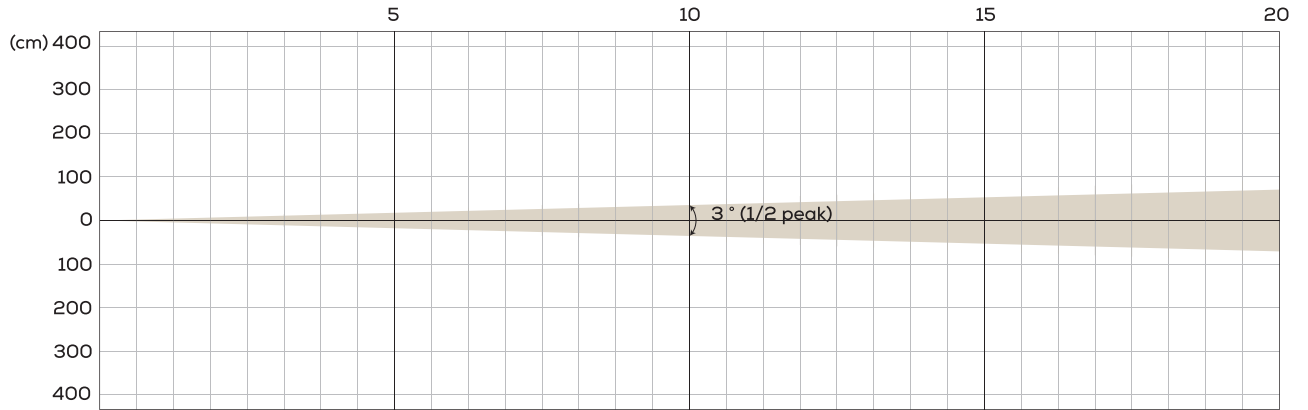
Fixture Dimension / Weight	1008 x 352.5 x 200 mm	32.4 kg
-----------------------------------	-----------------------	---------

Packing Dimension / Weight	1009 x 450 x 280 mm	43.4 kg
-----------------------------------	---------------------	---------

AUTO MODE / VALUE FOR ONE HEAD

MIN ZOOM

BEAM OPENING

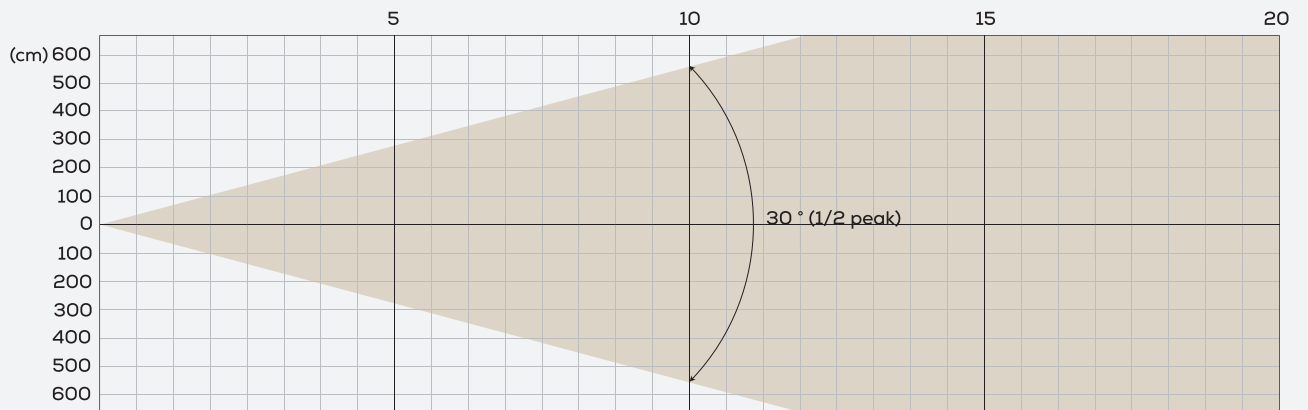


INTENSITY

Distance (m)	5		10		15		20	
	lux	diameter	lux	diameter	lux	diameter	lux	diameter
Red	2,941	0.35	735	0.7	368	1.05	184	1.4
Green	6,228	0.35	1,557	0.7	779	1.05	389	1.4
Blue	865	0.35	216	0.7	108	1.05	54	1.4
Lime	10,380	0.35	2,595	0.7	1,298	1.05	649	1.4
RGB-L	17,300	0.35	4,325	0.7	2,163	1.05	1,081	1.4

MAX ZOOM

BEAM OPENING



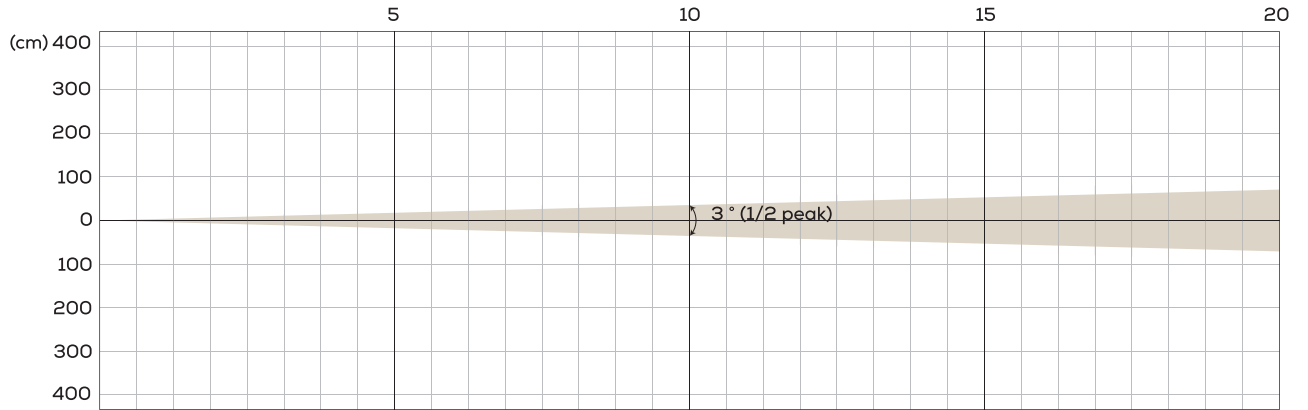
INTENSITY

Distance (m)	5		10		15		20	
	lux	diameter	lux	diameter	lux	diameter	lux	diameter
Red	71	5.54	18	11.09	9	16.63	4	22.17
Green	151	5.54	38	11.09	19	16.63	9	22.17
Blue	21	5.54	5	11.09	3	16.63	1	22.17
Lime	252	5.54	63	11.09	32	16.63	16	22.17
RGB-L	420	5.54	105	11.09	53	16.63	26	22.17

STAGE MODE / VALUE FOR ONE HEAD

MIN ZOOM

BEAM OPENING

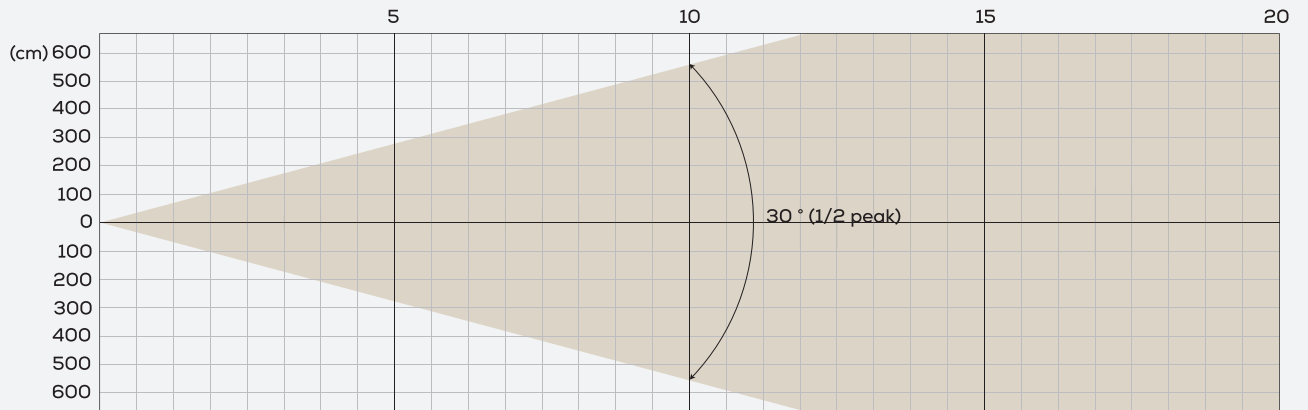


INTENSITY

Distance (m)	5		10		15		20	
	lux	diameter	lux	diameter	lux	diameter	lux	diameter
Red	3,332	0.35	833	0.7	417	1.05	208	1.4
Green	7,056	0.35	1,764	0.7	882	1.05	441	1.4
Blue	980	0.35	245	0.7	123	1.05	61	1.4
Lime	11,760	0.35	2,940	0.7	1,470	1.05	735	1.4
RGB-L	19,600	0.35	4,900	0.7	2,450	1.05	1,225	1.4

MAX ZOOM

BEAM OPENING



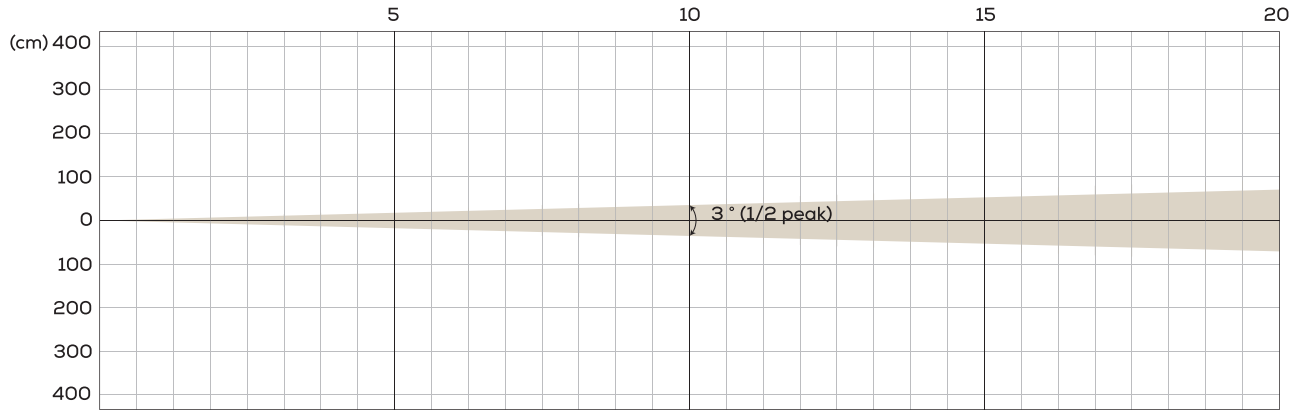
INTENSITY

Distance (m)	5		10		15		20	
	lux	diameter	lux	diameter	lux	diameter	lux	diameter
Red	81	5.54	20	11.09	10	16.63	5	22.17
Green	171	5.54	43	11.09	21	16.63	11	22.17
Blue	24	5.54	6	11.09	3	16.63	2	22.17
Lime	285	5.54	71	11.09	36	16.63	18	22.17
RGB-L	475	5.54	119	11.09	59	16.63	30	22.17

SILENCE MODE / VALUE FOR ONE HEAD

MIN ZOOM

BEAM OPENING

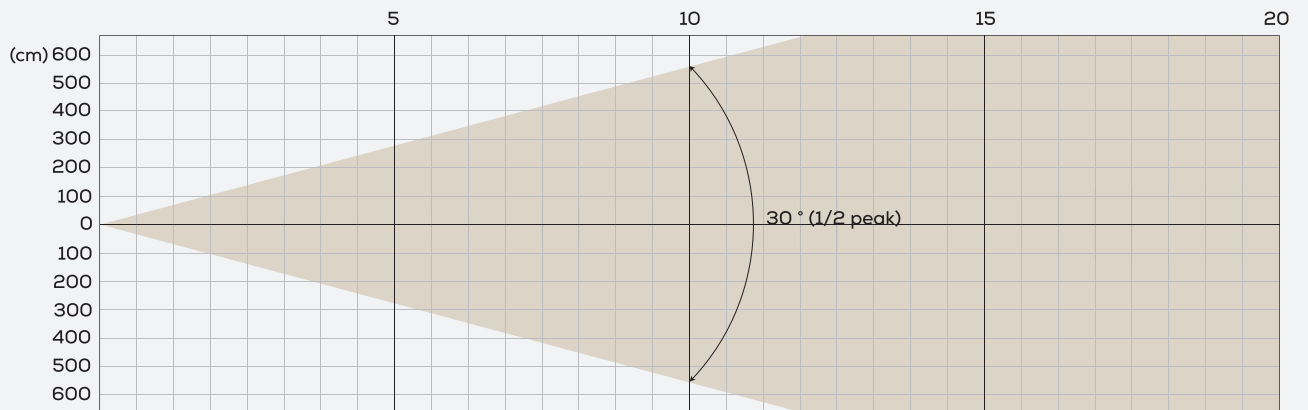


INTENSITY

Distance (m)	5		10		15		20	
	lux	diameter	lux	diameter	lux	diameter	lux	diameter
Red	2,414	0.35	604	0.7	302	1.05	151	1.4
Green	5,112	0.35	1,278	0.7	639	1.05	320	1.4
Blue	710	0.35	178	0.7	89	1.05	44	1.4
Lime	8,520	0.35	2,130	0.7	1,065	1.05	533	1.4
RGB-L	14,200	0.35	3,550	0.7	1,775	1.05	888	1.4

MAX ZOOM

BEAM OPENING



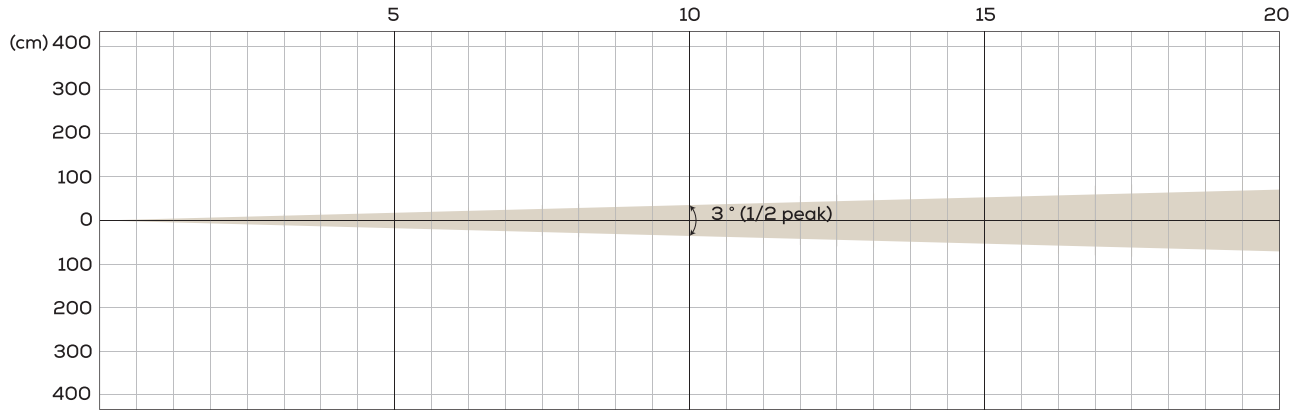
INTENSITY

Distance (m)	5		10		15		20	
	lux	diameter	lux	diameter	lux	diameter	lux	diameter
Red	58	5.54	15	11.09	7	16.63	4	22.17
Green	124	5.54	31	11.09	16	16.63	8	22.17
Blue	17	5.54	4	11.09	2	16.63	1	22.17
Lime	206	5.54	52	11.09	26	16.63	13	22.17
RGB-L	344	5.54	86	11.09	43	16.63	22	22.17

SUPER SILENCE MODE / VALUE FOR ONE HEAD

MIN ZOOM

BEAM OPENING

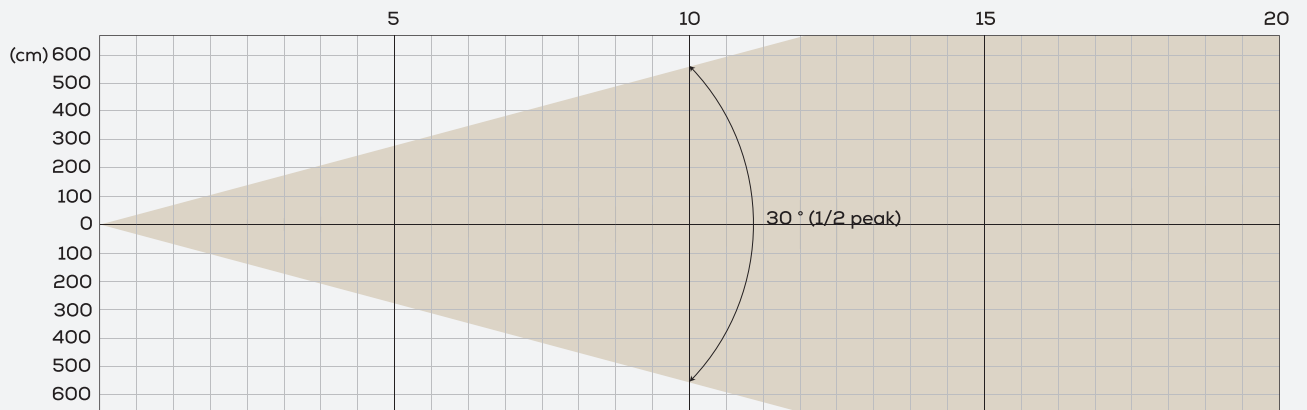


INTENSITY

Distance (m)	5		10		15		20	
	lux	diameter	lux	diameter	lux	diameter	lux	diameter
Red	1,938	0.35	485	0.7	242	1.05	121	1.4
Green	4,104	0.35	1,026	0.7	513	1.05	257	1.4
Blue	570	0.35	143	0.7	71	1.05	36	1.4
Lime	6840	0.35	1,710	0.7	855	1.05	428	1.4
RGB-L	11,400	0.35	2,850	0.7	1425	1.05	713	1.4

MAX ZOOM

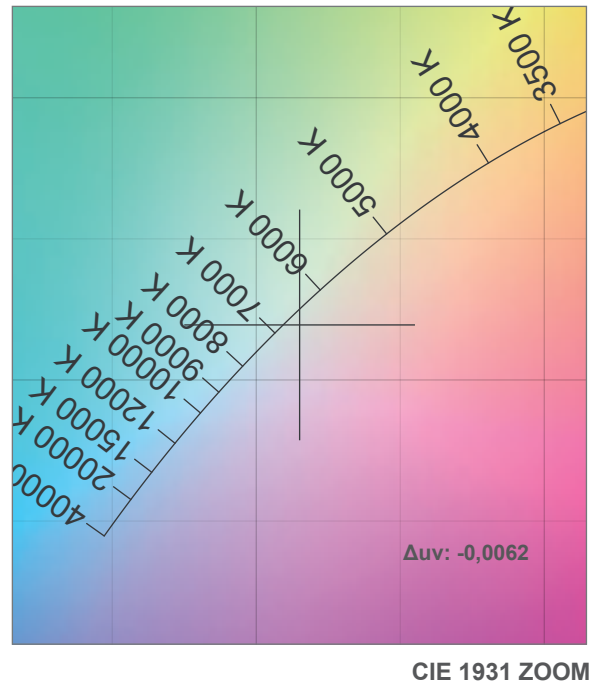
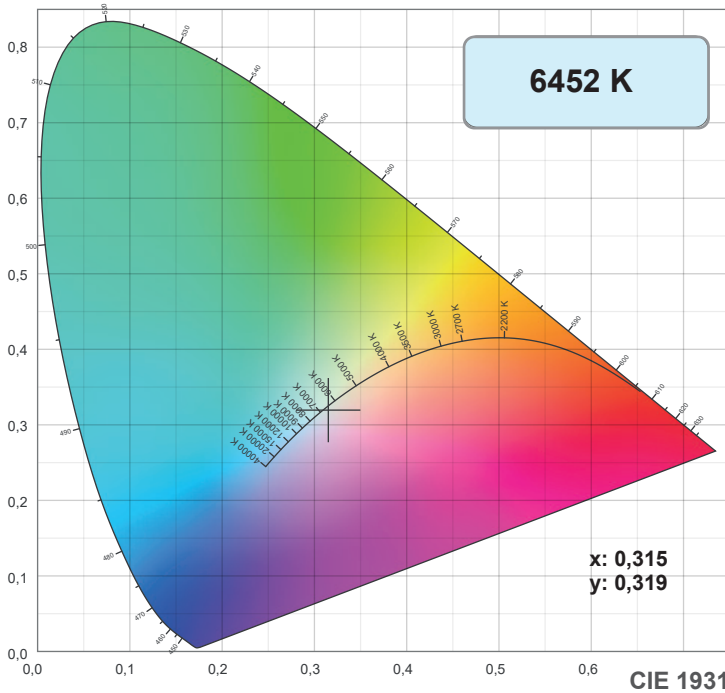
BEAM OPENING



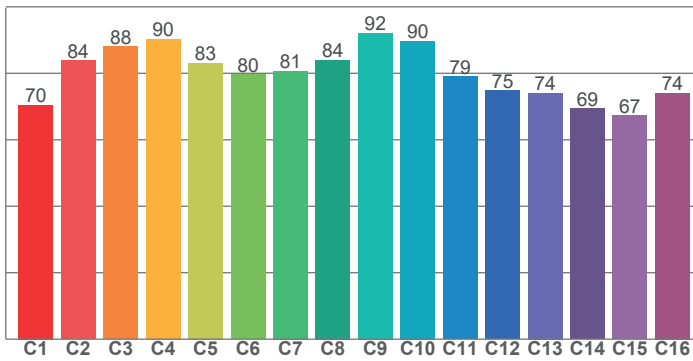
INTENSITY

Distance (m)	5		10		15		20	
	lux	diameter	lux	diameter	lux	diameter	lux	diameter
Red	47	5.54	12	11.09	6	16.63	3	22.17
Green	100	5.54	25	11.09	13	16.63	6	22.17
Blue	14	5.54	4	11.09	2	16.63	1	22.17
Lime	166	5.54	42	11.09	21	16.63	10	22.17
RGB-L	277	5.54	69	11.09	35	16.63	17	22.17

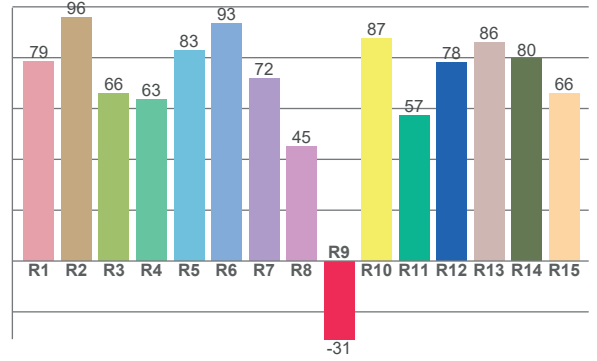
COLOUR DETAILS / VALUE FOR ONE HEAD



TM-30: 80,9



CRI: 74,6 (R1-R8)



CRI R values, only R1-R8 are used to calculate final CRI value

R1	R2	R3	R4	R5	R6	R7	R8	R9	R10	R11	R12	R13	R14	R15
78,5	95,8	66,0	63,4	82,8	93,3	71,7	44,9	-30,7	87,4	57,3	78,1	86,1	79,5	66,1

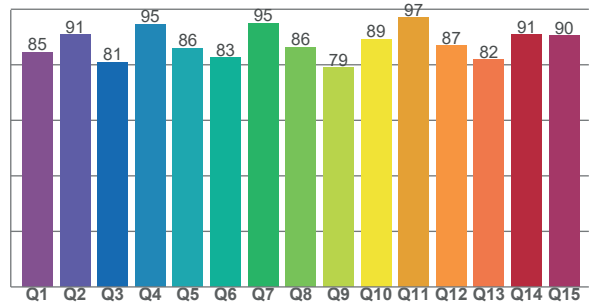
TM30 C values, 16 binned values out of total of 99 C values

C1	C2	C3	C4	C5	C6	C7	C8	C9	C10	C11	C12	C13	C14	C15	C16
70,4	83,8	88,1	90,3	83,1	79,6	80,7	84,0	92,1	89,7	79,0	74,9	74,0	69,5	67,3	74,1

CQS Q values

Q1	Q2	Q3	Q4	Q5	Q6	Q7	Q8	Q9	Q10	Q11	Q12	Q13	Q14	Q15
84,5	90,9	80,9	94,7	85,9	82,6	95,0	86,3	78,9	89,2	96,9	87,0	81,9	90,8	90,4

CQS: 86,7



Color parameters

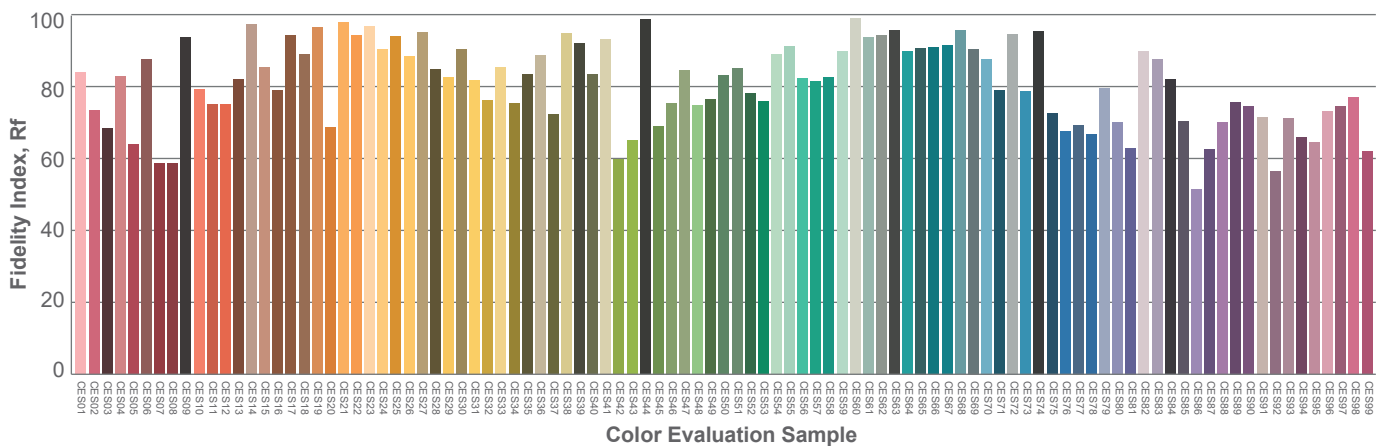
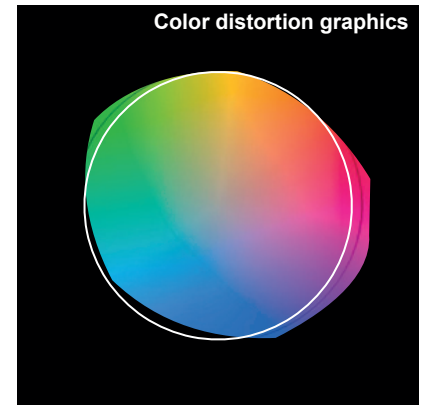
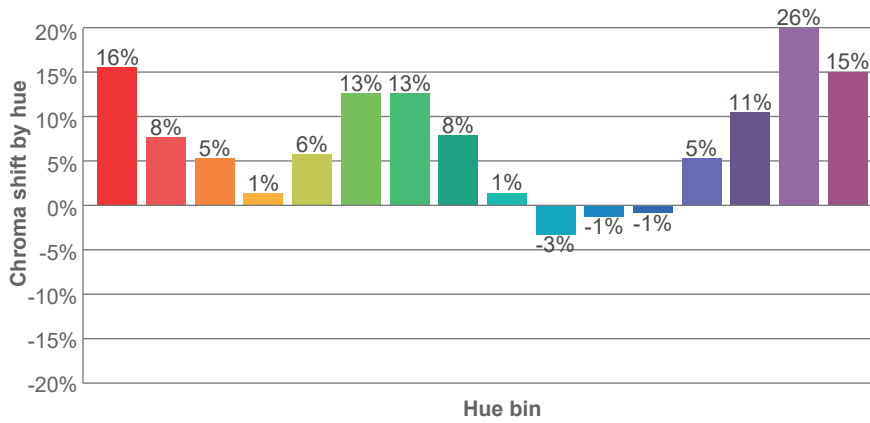
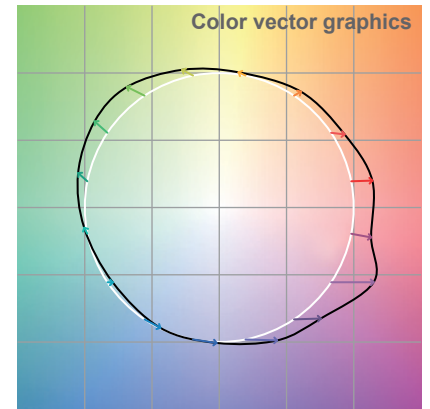
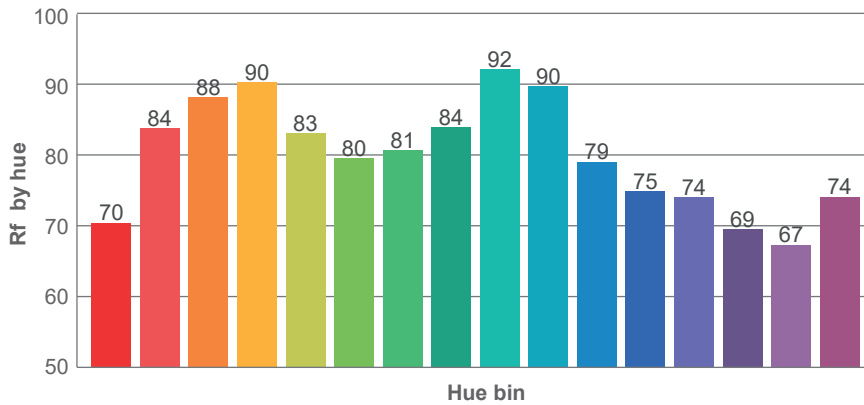
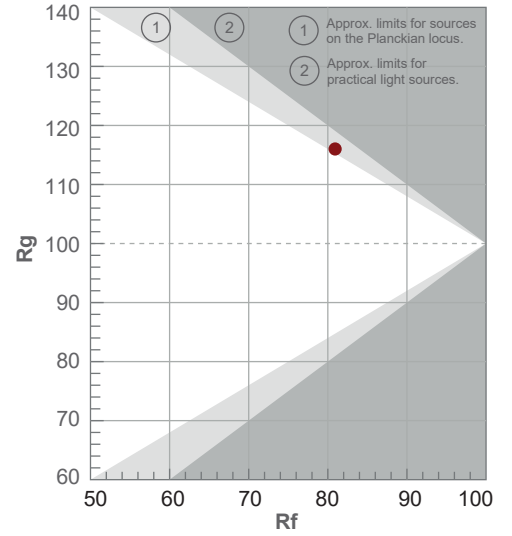
Color temperature	Color rendering index	Red component	Color fidelity	Color gamut	Color quality scale	Color coordinate cie 1931	Color coordinate cie 1931	Color coordinate	Color coordinate	Color deviation from black body
CCT	CRI	CRI R9	TM30 Rf	TM30 Rg	CQS	x	y	u	v	Δuv
6452 K	74,6	-30,7	80,9	116,0	86,7	0,315	0,319	0,203	0,309	-0,0062

TM-30 DETAILS / VALUE FOR ONE HEAD

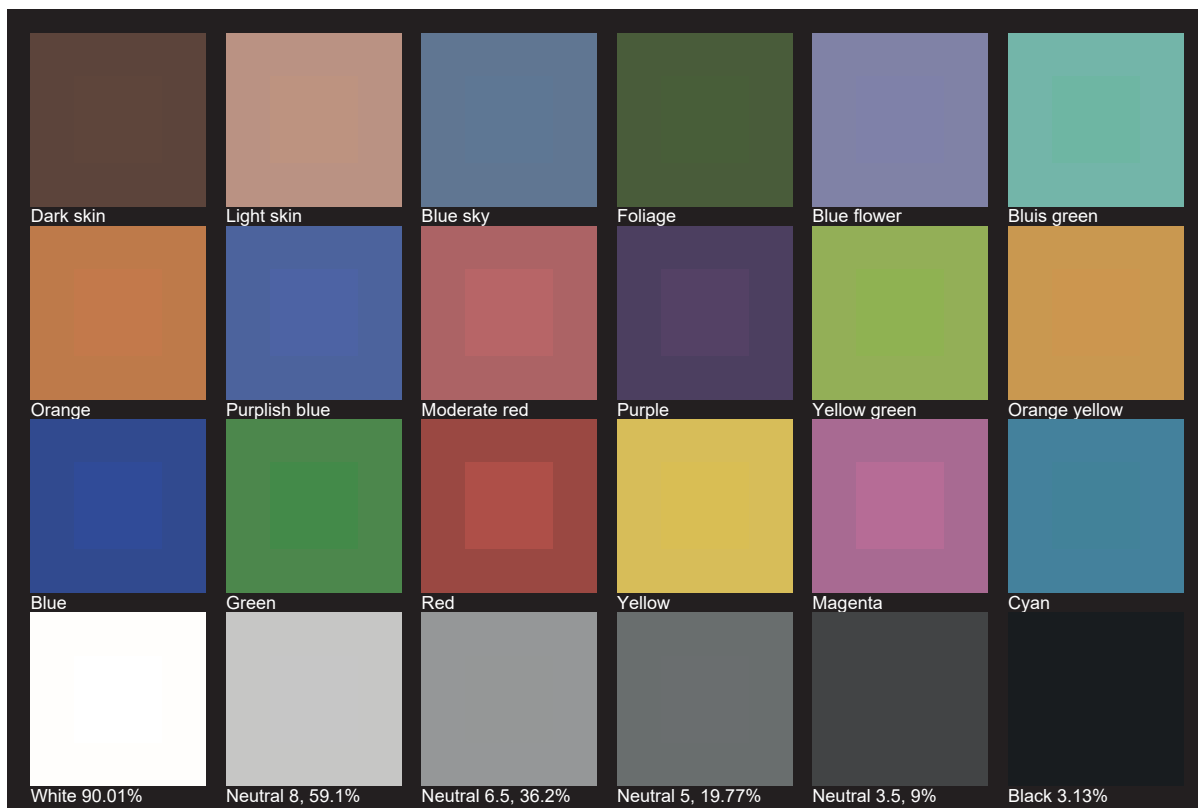
Rf 80,9
Fidelity index Rf

Rg 116,0
Gamut index Rg

Hue Bin	R _f	Shifts (%)	
		Chroma	Hue
1	70	16%	-3%
2	84	8%	-7%
3	88	5%	-3%
4	90	1%	6%
5	83	6%	7%
6	80	13%	7%
7	81	13%	-2%
8	84	8%	-5%
9	92	1%	-5%
10	90	-3%	2%
11	79	-1%	13%
12	75	-1%	18%
13	74	5%	23%
14	69	11%	17%
15	67	26%	18%
16	74	15%	0%



TLCI 66 / VALUE FOR ONE HEAD





AYRTON

Digital Lighting