



# LEVANTE S

PHOTOMETRY



**AYRTON**  
Digital Lighting





<b>Total Flux</b>	20638 lm (@zoom 128, integrating sphere measurement, Fan mode auto)
-------------------	---

<b>CCT @LED engin</b>	8000 (±500K)
<b>CCT @open</b>	7000 (±500K)
<b>Ra @open</b>	70 (±2)
<b>TLCI</b>	47
<b>TM-30</b>	Rf: 68.9 Rg: 94.2

<b>Fan Mode</b>	<b>Noise Level (dBA)</b>	<b>by Goniometer (lm)</b>	<b>by Sphere (lm)</b>
<b>Auto</b>	44,7	17039	20531
<b>Stage</b>	49,1	16882	20638
<b>Silence</b>	38,7	10887	15426
<b>Super Silence</b>	34,8	9203	11110

Note: noise measured @1m distance, static status, ambient 31 dBA.

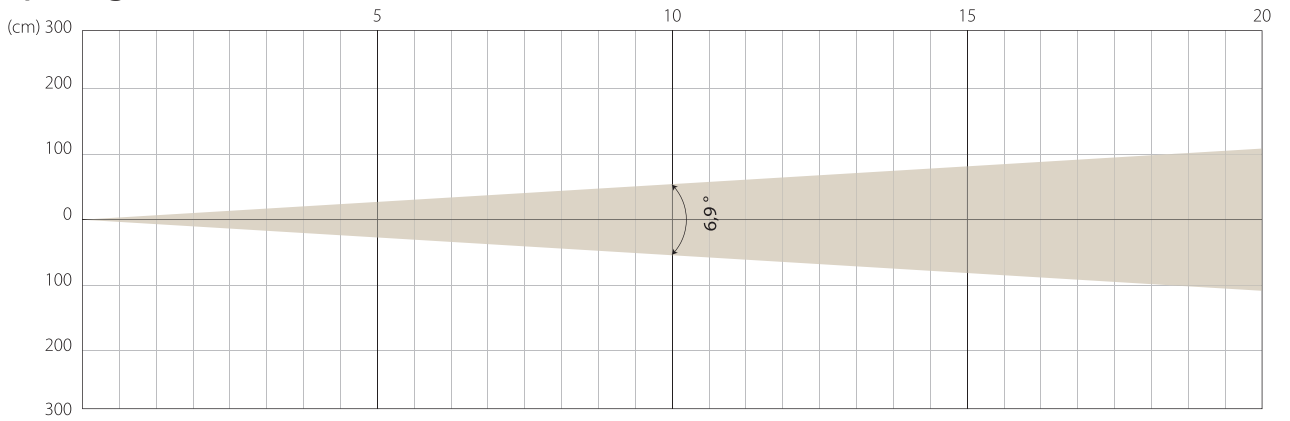
<b>Voltage / Power</b>	100-240V, 50-60HZ	550 W
<b>Fixture Dimension / Weight</b>	365 x 632 x 212 mm	22 kg
<b>Packing Dimension / Weight</b>	445 x 750 x 295 mm	30.5 kg

# AUTO MODE

NATIVE CRI GREATER THAN 70

MIN ZOOM

## Beam Opening

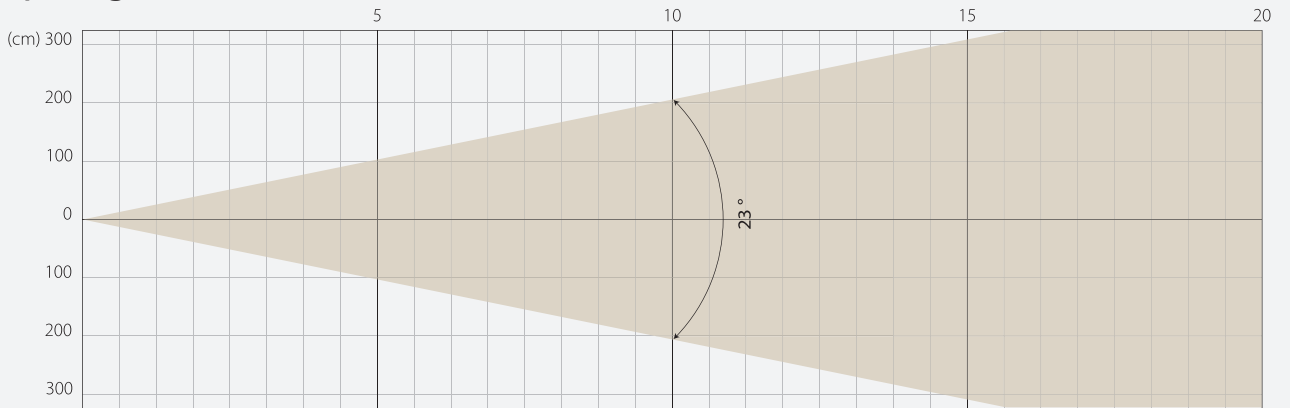


## Intensity

Distance (m)	5		10		15		20	
unit	lux	diameter	lux	diameter	lux	diameter	lux	diameter
White	48298	0,6	12075	1,21	5366	1,81	3019	2,41

MIDDLE ZOOM

## Beam Opening

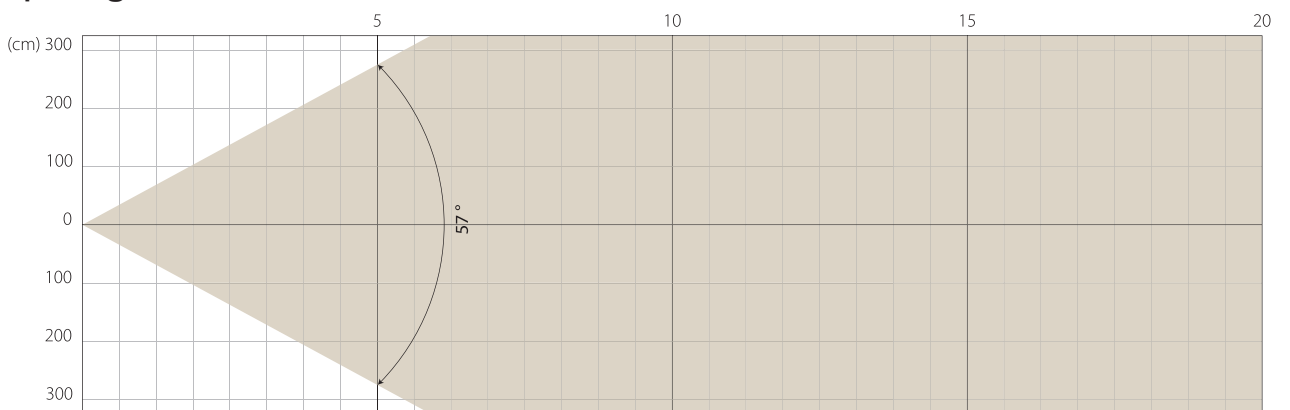


## Intensity

Distance (m)	5		10		15		20	
unit	lux	diameter	lux	diameter	lux	diameter	lux	diameter
White	6819	2,03	1705	4,07	758	6,1	426	8,14

MAX ZOOM

## Beam Opening



## Intensity

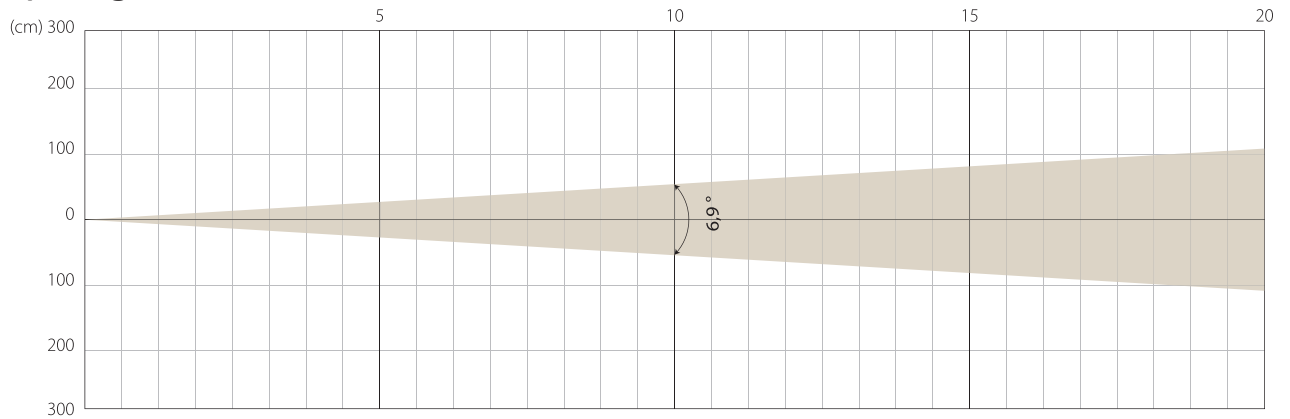
Distance (m)	5		10		15		20	
unit	lux	diameter	lux	diameter	lux	diameter	lux	diameter
White	1141	5,43	285	10,86	127	16,29	71	21,72

# STAGE MODE

NATIVE CRI GREATER THAN 70

MIN ZOOM

## Beam Opening

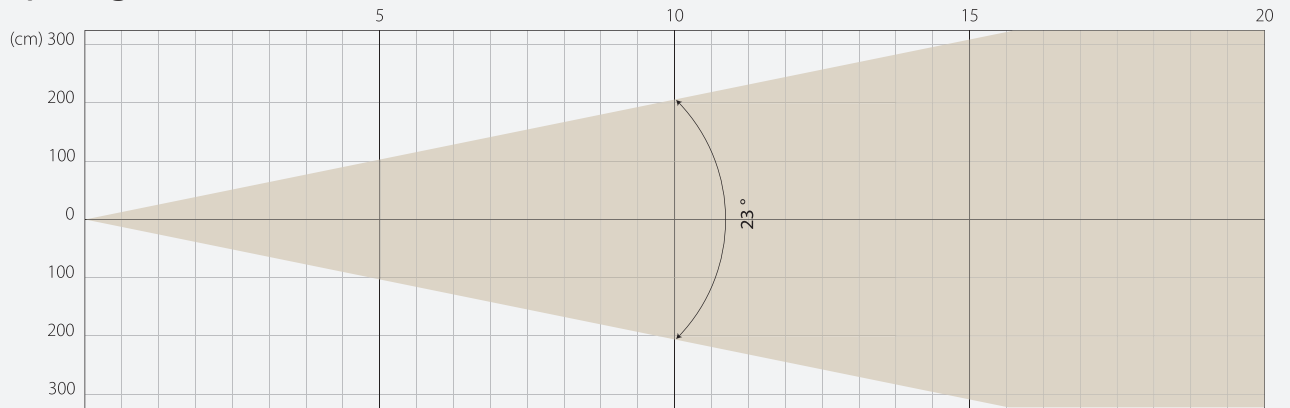


## Intensity

Distance (m)	5		10		15		20	
unit	lux	diameter	lux	diameter	lux	diameter	lux	diameter
White	50003	0,6	12501	1,21	5556	1,81	3125	2,41

MIDDLE ZOOM

## Beam Opening

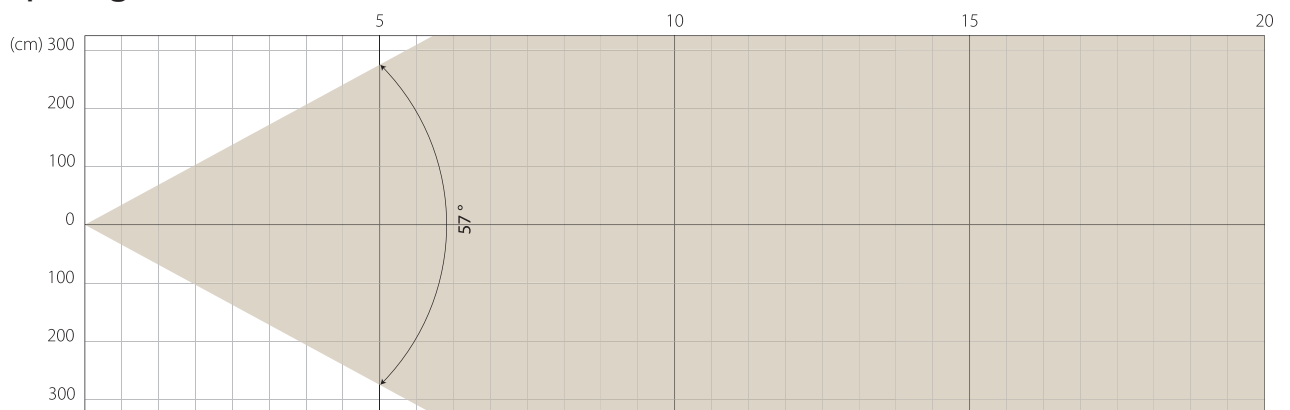


## Intensity

Distance (m)	5		10		15		20	
unit	lux	diameter	lux	diameter	lux	diameter	lux	diameter
White	6888	2,03	1722	4,07	765	6,1	430	8,14

MAX ZOOM

## Beam Opening

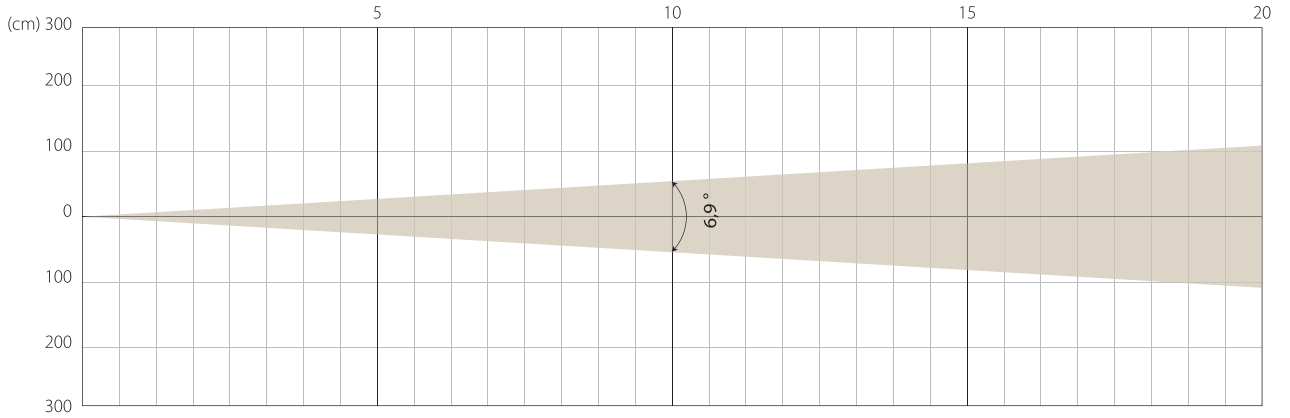


## Intensity

Distance (m)	5		10		15		20	
unit	lux	diameter	lux	diameter	lux	diameter	lux	diameter
White	1147	5,43	287	10,86	127	16,29	72	21,72

MIN ZOOM

## Beam Opening

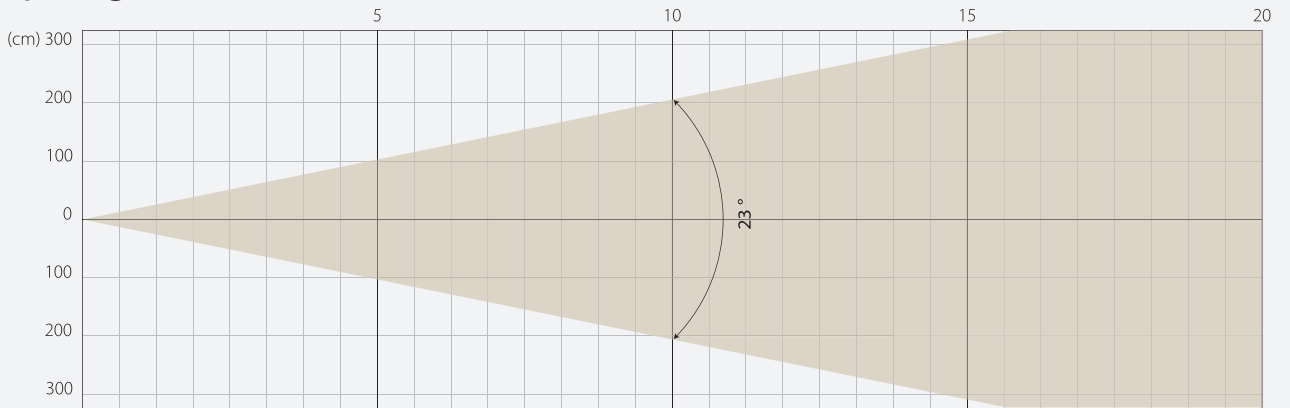


## Intensity

Distance (m)	5		10		15		20	
unit	lux	diameter	lux	diameter	lux	diameter	lux	diameter
White	30572	0,6	7643	1,21	3397	1,81	1911	2,41

MIDDLE ZOOM

## Beam Opening

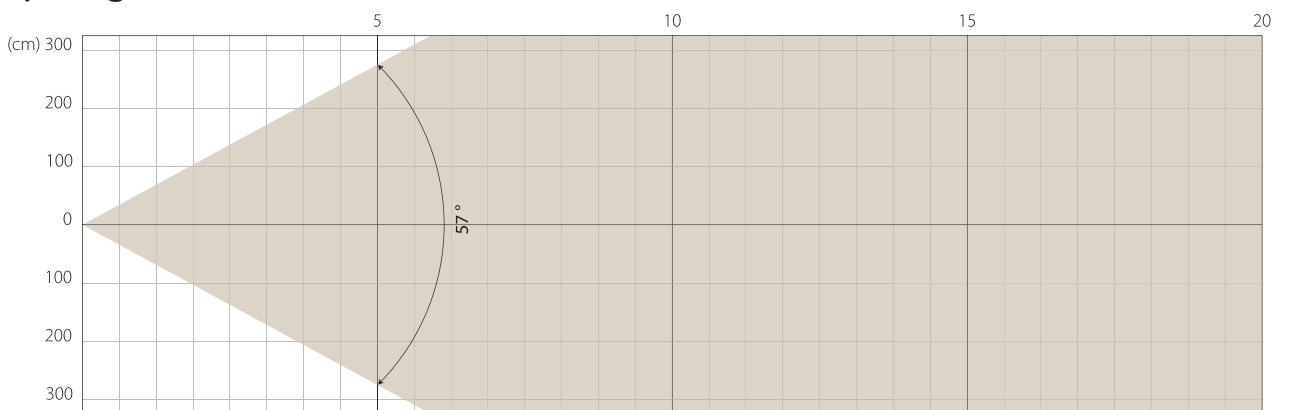


## Intensity

Distance (m)	5		10		15		20	
unit	lux	diameter	lux	diameter	lux	diameter	lux	diameter
White	4341	2,03	1085	4,07	482	6,1	271	8,14

MAX ZOOM

## Beam Opening



## Intensity

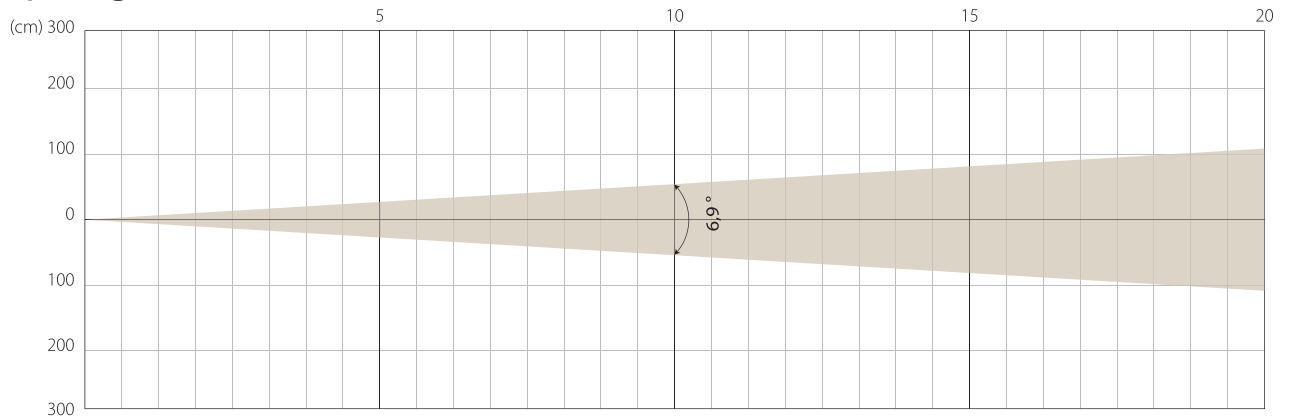
Distance (m)	5		10		15		20	
unit	lux	diameter	lux	diameter	lux	diameter	lux	diameter
White	716	5,43	179	10,86	80	16,29	45	21,72

# SUPER SILENCE MODE

NATIVE CRI GREATER THAN 70

MIN ZOOM

## Beam Opening

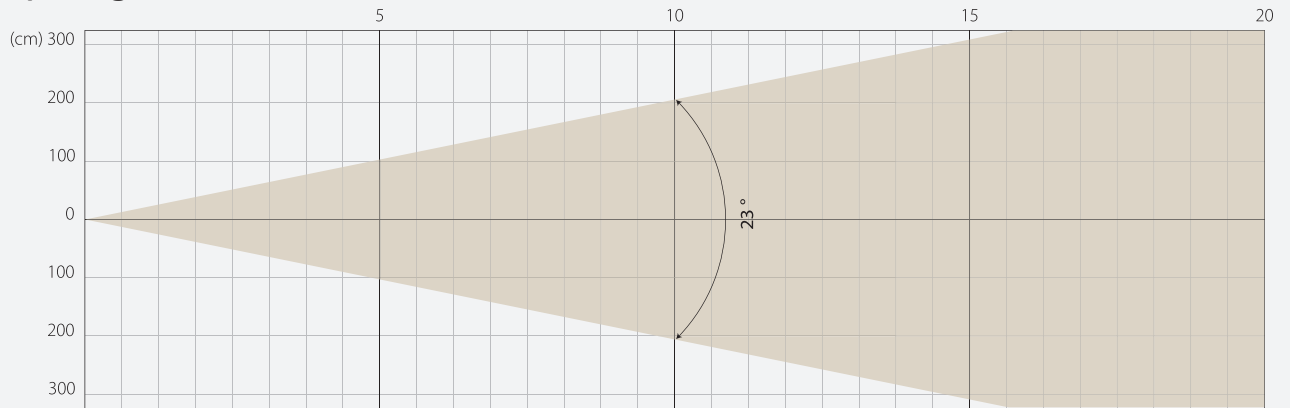


## Intensity

Distance (m)	5		10		15		20	
unit	lux	diameter	lux	diameter	lux	diameter	lux	diameter
White	25687	0,6	6422	1,21	2854	1,81	1605	2,41

MIDDLE ZOOM

## Beam Opening

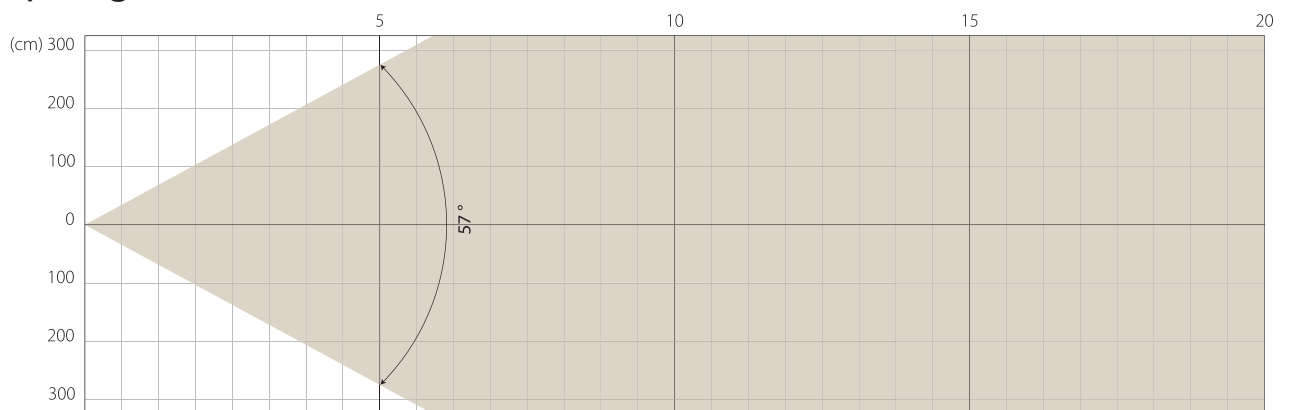


## Intensity

Distance (m)	5		10		15		20	
unit	lux	diameter	lux	diameter	lux	diameter	lux	diameter
White	3629	2,03	907	4,07	403	6,1	227	8,14

MAX ZOOM

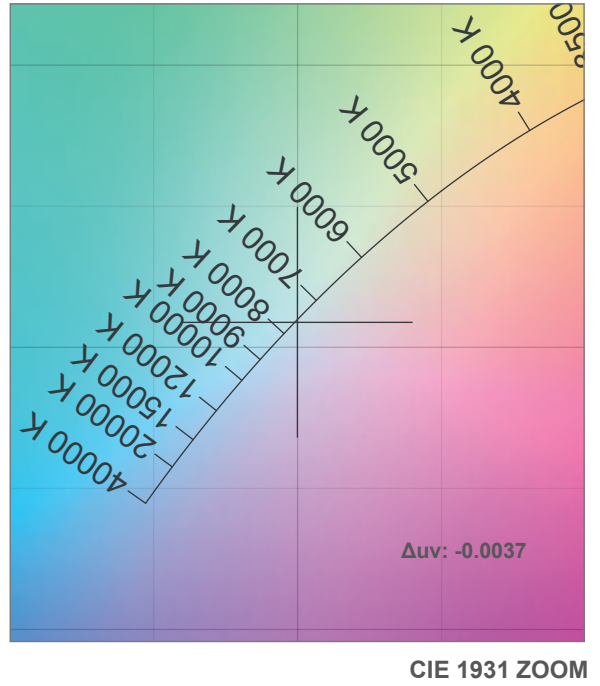
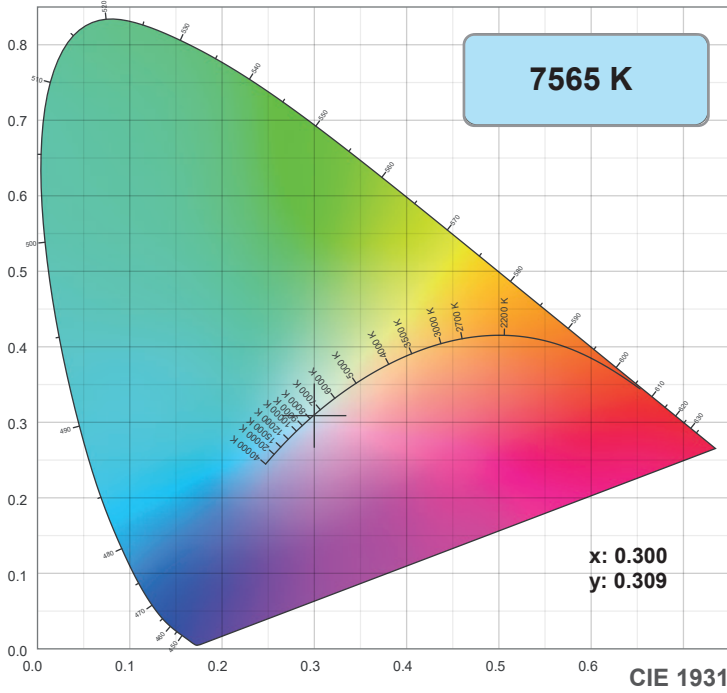
## Beam Opening



## Intensity

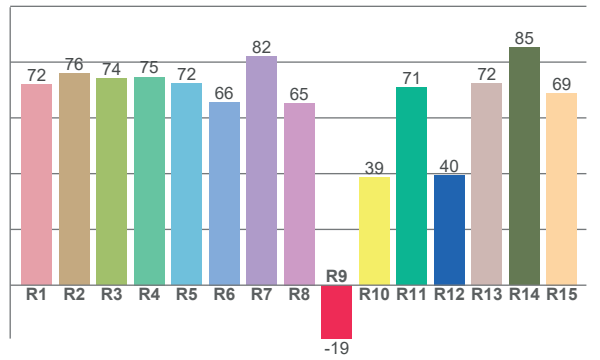
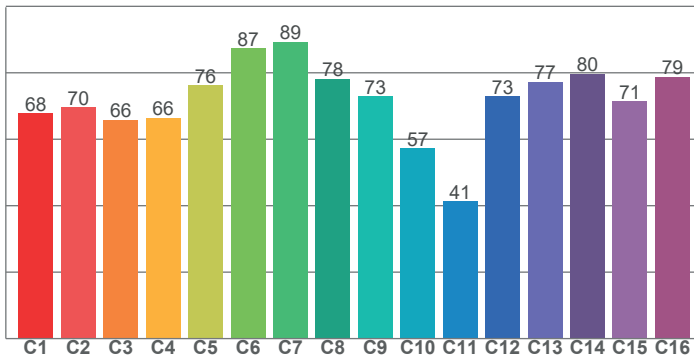
Distance (m)	5		10		15		20	
unit	lux	diameter	lux	diameter	lux	diameter	lux	diameter
White	601	5,43	150	10,86	67	16,29	38	21,72

# COLOR DETAILS



**TM-30: 71.6**

**CRI: 72.7 (R1-R8)**



CRI R values, only R1-R8 are used to calculate final CRI value

R1	R2	R3	R4	R5	R6	R7	R8	R9	R10	R11	R12	R13	R14	R15
71.9	75.8	74.2	74.7	72.3	65.6	82.0	65.3	-19.1	38.6	71.0	39.5	72.3	85.3	68.9

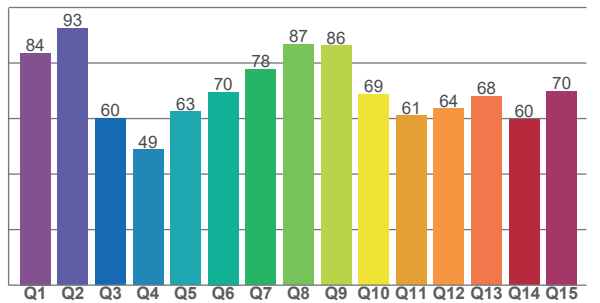
TM30 C values, 16 binned values out of total of 99 C values

C1	C2	C3	C4	C5	C6	C7	C8	C9	C10	C11	C12	C13	C14	C15	C16
67.7	69.6	65.9	66.5	76.2	87.3	89.4	78.1	72.9	57.2	41.4	72.9	77.3	79.7	71.5	78.8

CQS Q values

Q1	Q2	Q3	Q4	Q5	Q6	Q7	Q8	Q9	Q10	Q11	Q12	Q13	Q14	Q15
83.6	92.5	60.1	48.9	62.5	69.6	77.7	86.7	86.2	68.8	61.1	63.5	68.1	59.7	69.9

**CQS: 68.3**



## Color parameters

Color temperature	Color rendering index	Red component	Color fidelity	Color gamut	Color quality scale	Color coordinate cie 1931	Color coordinate cie 1931	Color coordinate	Color coordinate	Color deviation from black body
CCT	CRI	CRI R9	TM30 Rf	TM30 Rg	CQS	x	y	u	v	Δuv
7565 K	72.7	-19.1	71.6	93.0	68.3	0.300	0.309	0.196	0.303	-0.0037

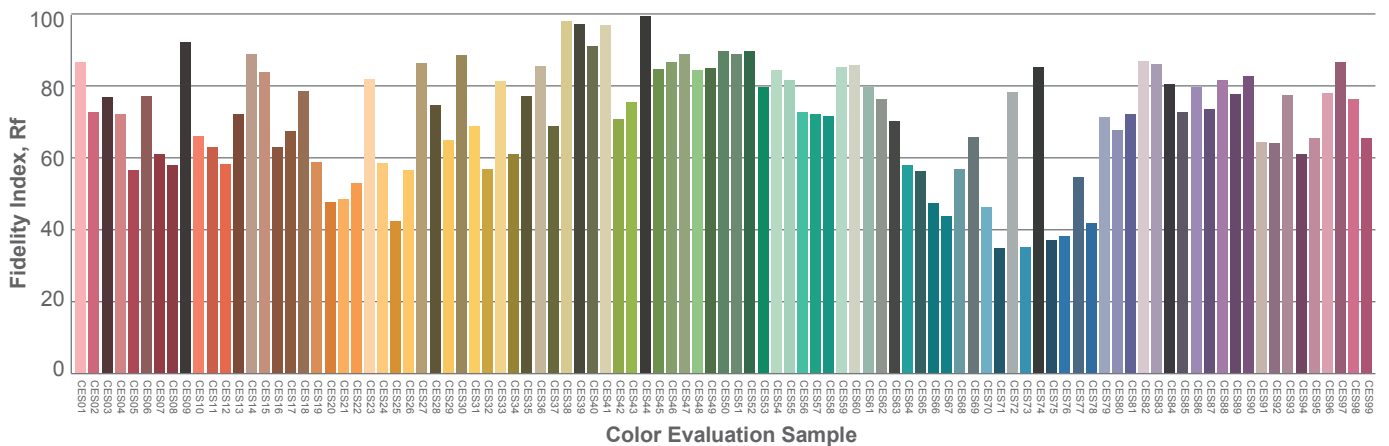
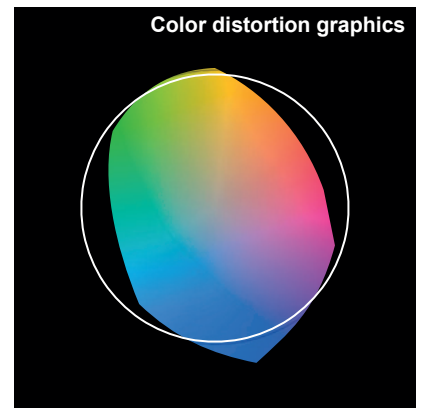
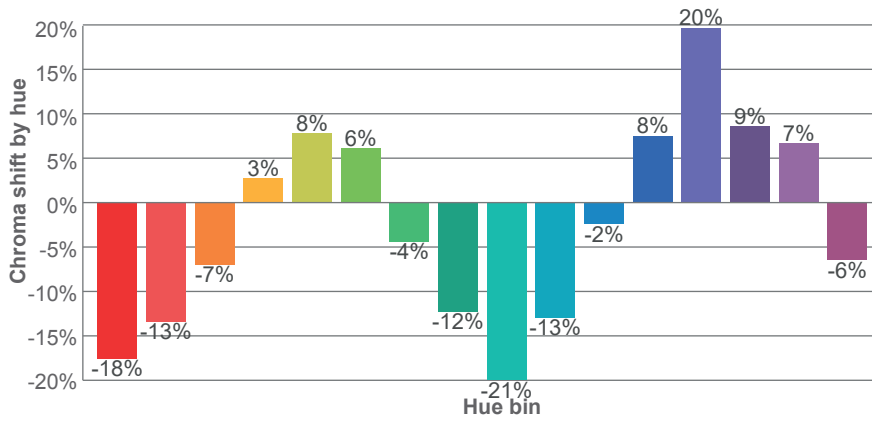
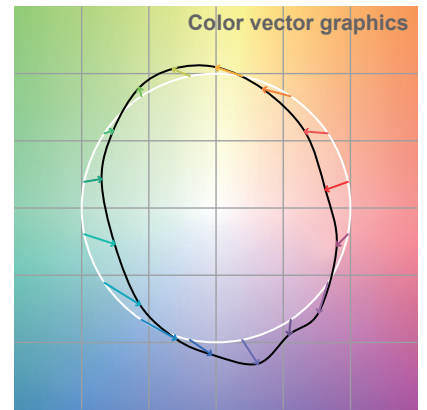
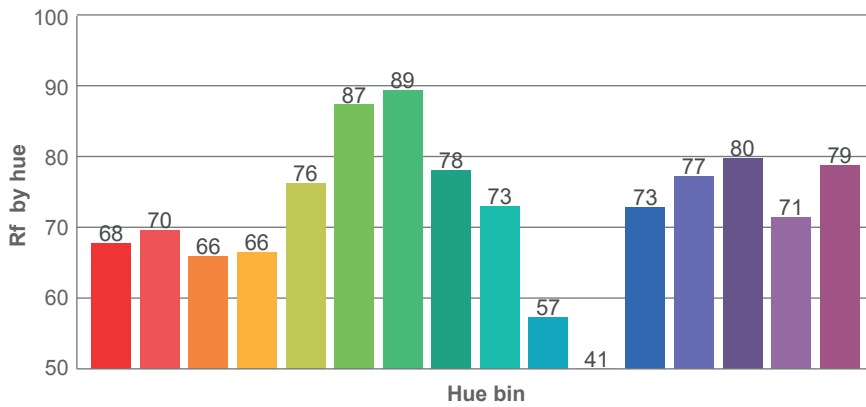
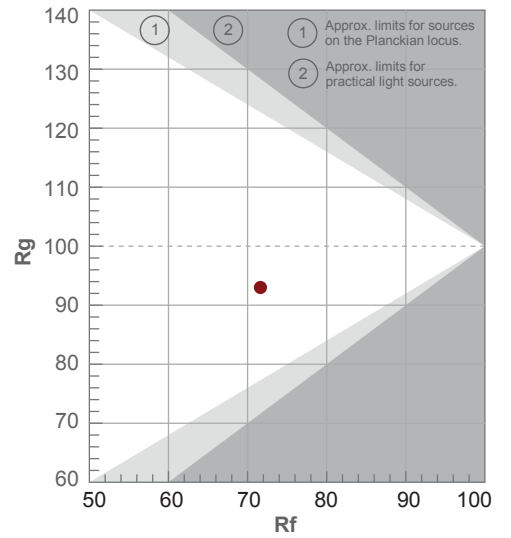


# TM-30 DETAILS

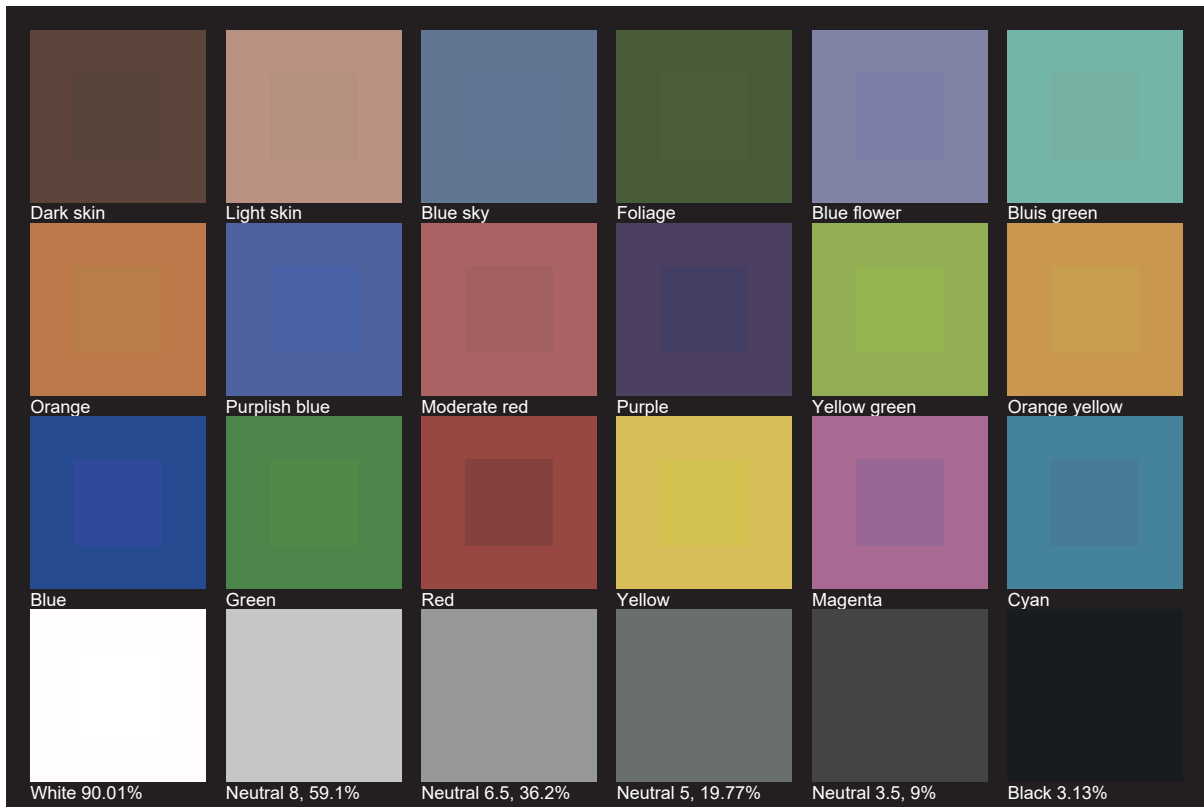
**Rf 71.6**  
Fidelity index Rf

**Rg 93.0**  
Gamut index Rg

Hue Bin	R <sub>f</sub>	Shifts (%)	
		Chroma	Hue
1	68	-18%	-3%
2	70	-13%	11%
3	66	-7%	20%
4	66	3%	21%
5	76	8%	11%
6	87	6%	-2%
7	89	-4%	-5%
8	78	-12%	-5%
9	73	-21%	12%
10	57	-13%	28%
11	41	-2%	29%
12	73	8%	18%
13	77	20%	8%
14	80	9%	-7%
15	71	7%	-22%
16	79	-6%	-10%



# TLCI 47







**AYRTON**

Digital Lighting