



# HURACÁN WASH S

PHOTOMETRY



**AYRTON**  
Digital Lighting





<b>Total Flux</b>	43173 lm (@zoom 128, fan mode stage, Goniometer)
-------------------	--

<b>CCT @LED engin</b>	8000 (±400K)
<b>CCT @open</b>	7000 (±500K)
<b>Ra @open</b>	70 (±2)
<b>TLCI</b>	49
<b>TM-30</b>	Rf: 72.2 Rg: 92.8

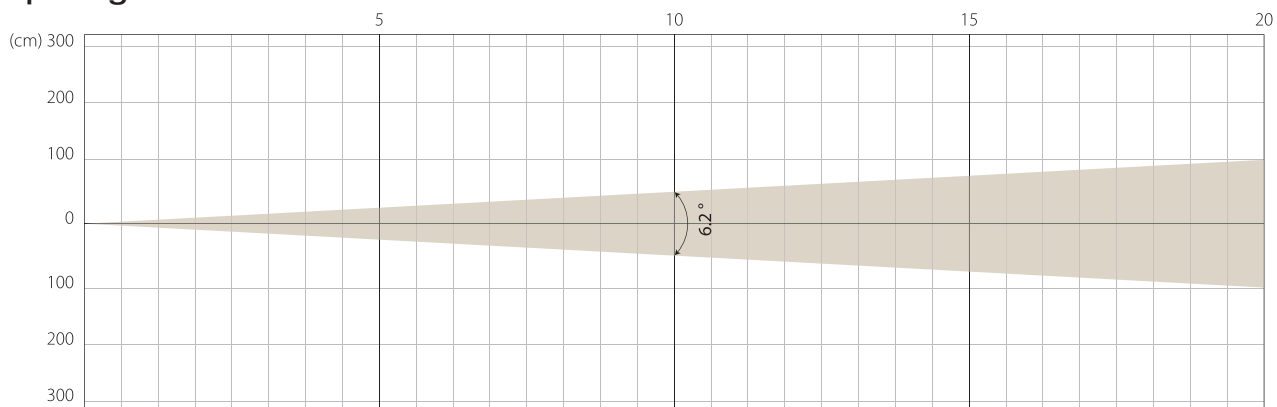
<b>Fan Mode</b>	<b>Noise Level (dBA)</b>	<b>by Goniometer (lm)</b>	<b>by Sphere (lm)</b>
<b>Auto</b>	45,5	41469	50886
<b>Stage</b>	51,2	43173	52136
<b>Silence</b>	38,8	31485	39356
<b>Super Silence</b>	34,1	18520	23150

Note: noise measured @1m distance, static status, ambient 31 dBA.

<b>Voltage / Power</b>	100-240V, 50-60Hz	1,470 W
<b>Fixture Dimension / Weight</b>	494 x 789 x 294 mm	42.1 kg
<b>Packing Dimension / Weight</b>	730 x 570 x 710 mm	60.1 kg

MIN ZOOM

### Beam Opening

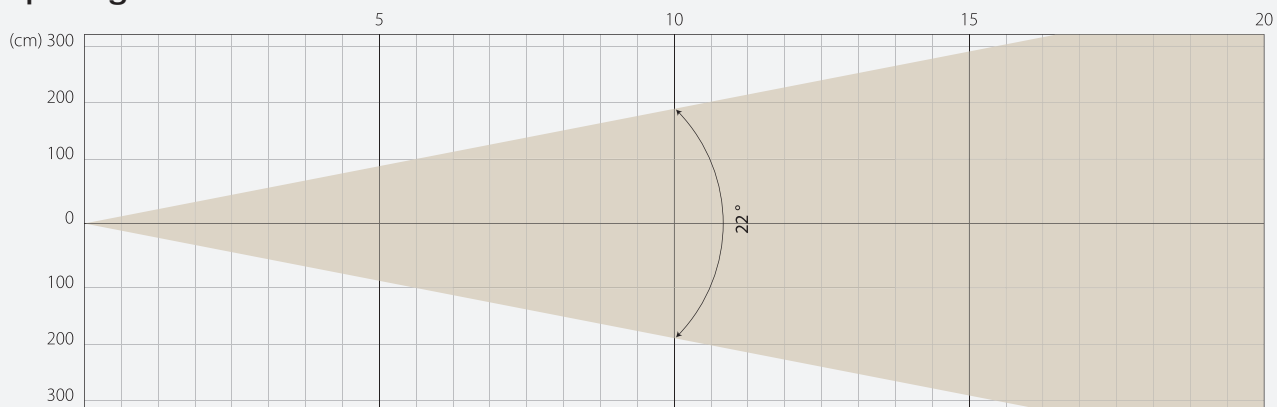


### Intensity

Distance (m)	5		10		15		20	
unit	lux	diameter	lux	diameter	lux	diameter	lux	diameter
White	103896	0,54	25974	1,08	11544	1,62	6494	2,17

MIDDLE ZOOM

### Beam Opening

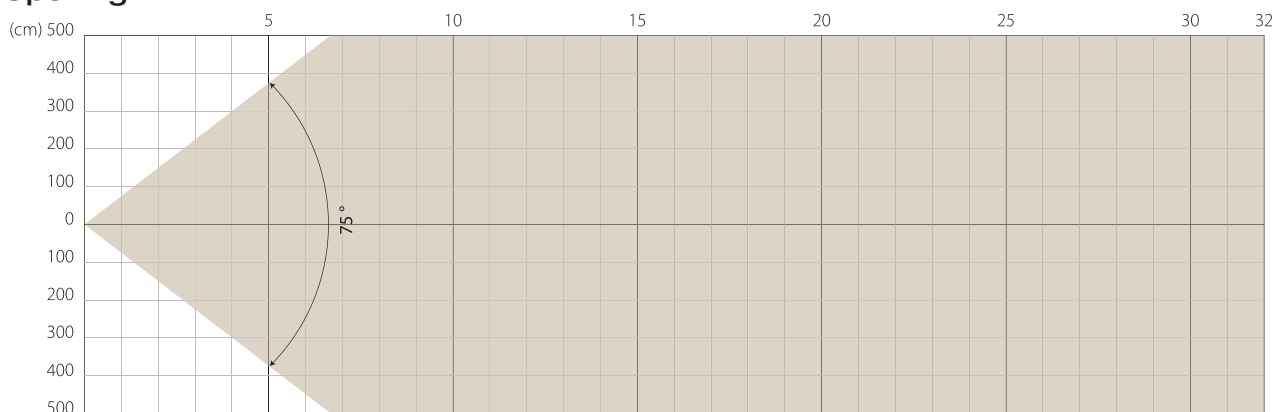


### Intensity

Distance (m)	5		10		15		20	
unit	lux	diameter	lux	diameter	lux	diameter	lux	diameter
White	13929	1,94	3482	3,89	1548	5,83	871	7,78

MAX ZOOM

### Beam Opening



### Intensity

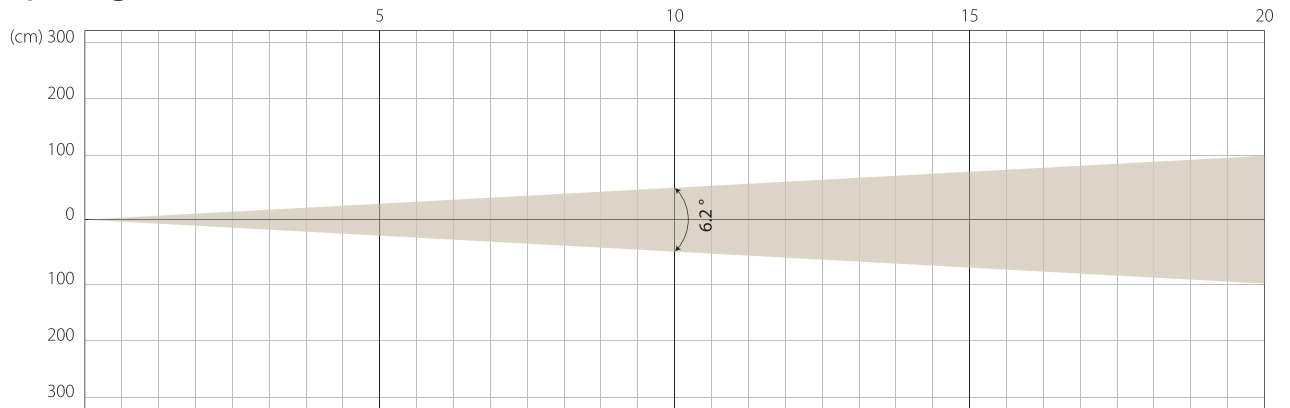
Distance (m)	5		10		15		20	
unit	lux	diameter	lux	diameter	lux	diameter	lux	diameter
White	1933	7,67	483	15,35	215	23,02	121	30,69

# STAGE MODE

NATIVE CRI GREATER THAN 70

MIN ZOOM

## Beam Opening

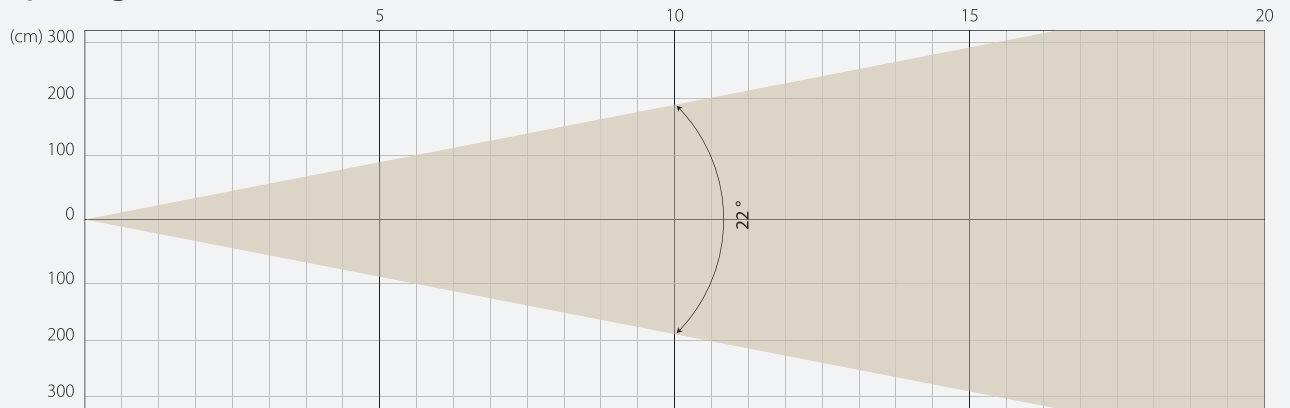


## Intensity

Distance (m)	5		10		15		20	
unit	lux	diameter	lux	diameter	lux	diameter	lux	diameter
White	110294	0,54	27574	1,08	12255	1,62	6893	2,17

MIDDLE ZOOM

## Beam Opening

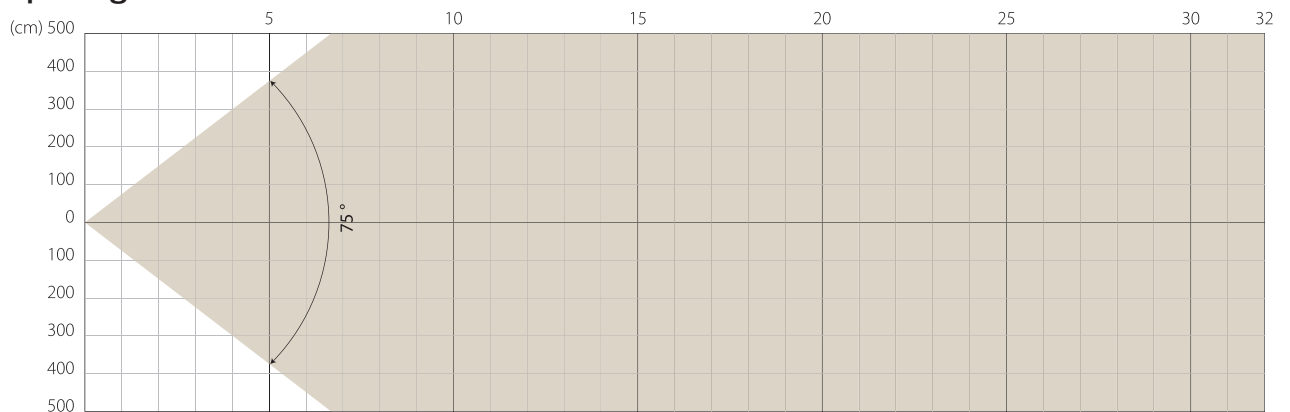


## Intensity

Distance (m)	5		10		15		20	
unit	lux	diameter	lux	diameter	lux	diameter	lux	diameter
White	14586	1,94	3646	3,89	1621	5,83	912	7,78

MAX ZOOM

## Beam Opening



## Intensity

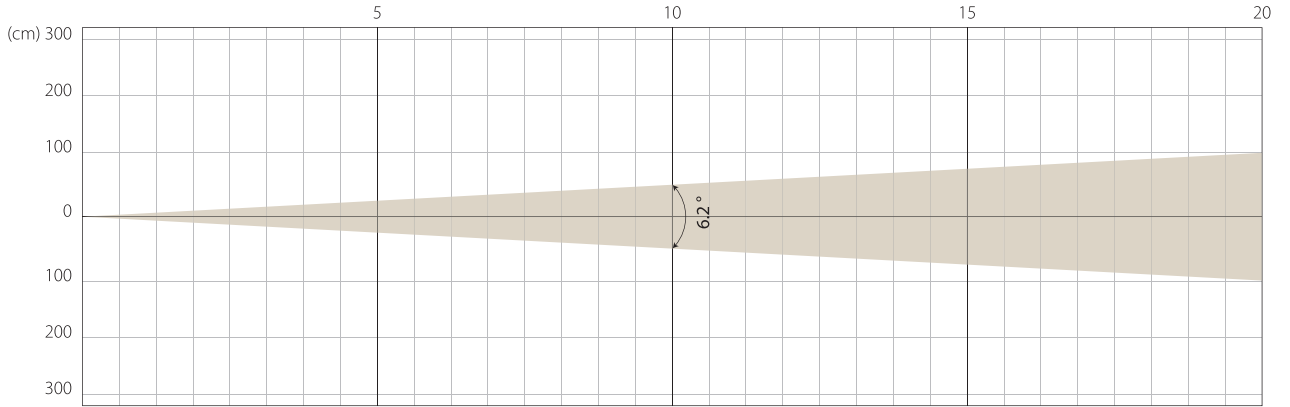
Distance (m)	5		10		15		20	
unit	lux	diameter	lux	diameter	lux	diameter	lux	diameter
White	2003	7,67	501	15,35	223	23,02	125	30,69

# SILENCE MODE

NATIVE CRI GREATER THAN 70

MIN ZOOM

## Beam Opening

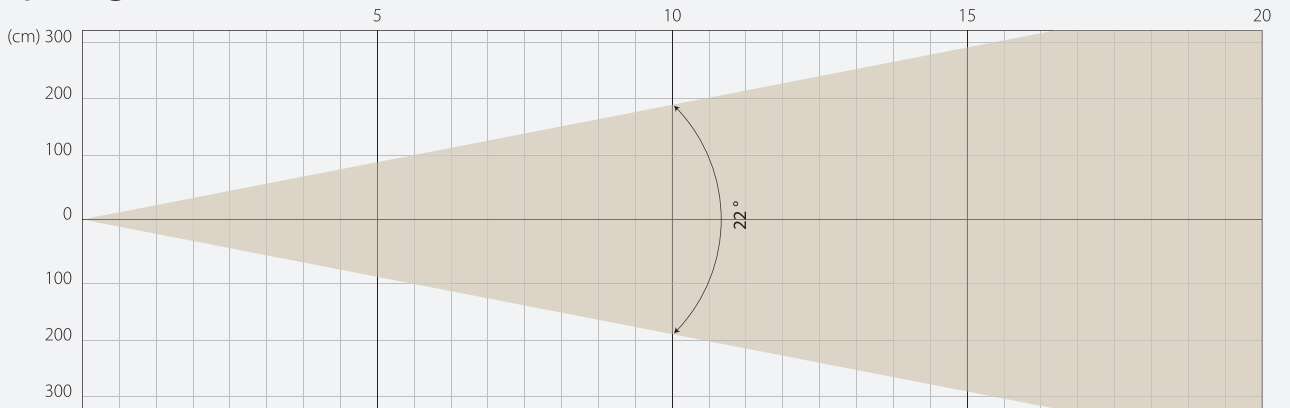


## Intensity

Distance (m)	5		10		15		20	
unit	lux	diameter	lux	diameter	lux	diameter	lux	diameter
White	76079	0,54	19020	1,08	8453	1,62	4755	2,17

MIDDLE ZOOM

## Beam Opening

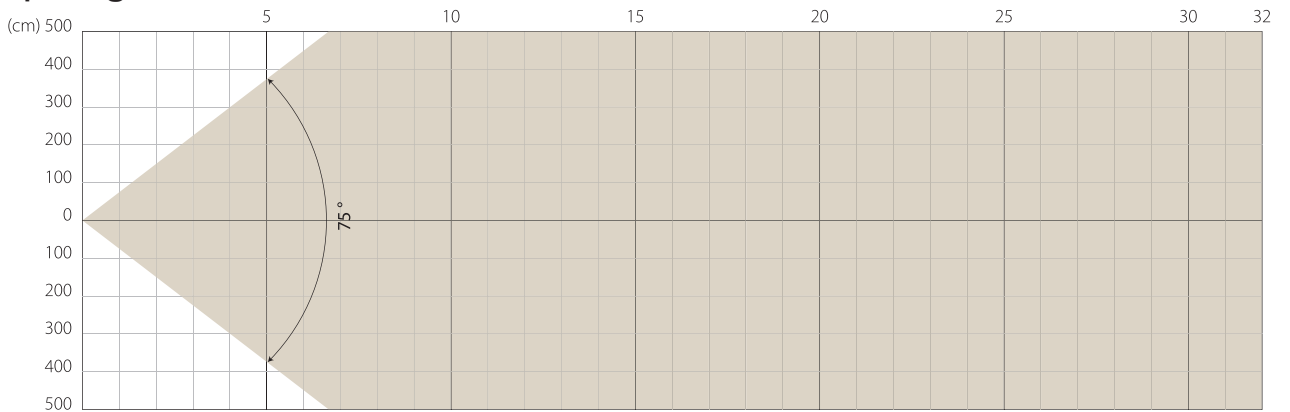


## Intensity

Distance (m)	5		10		15		20	
unit	lux	diameter	lux	diameter	lux	diameter	lux	diameter
White	10107	1,94	2527	3,89	1123	5,83	632	7,78

MAX ZOOM

## Beam Opening



## Intensity

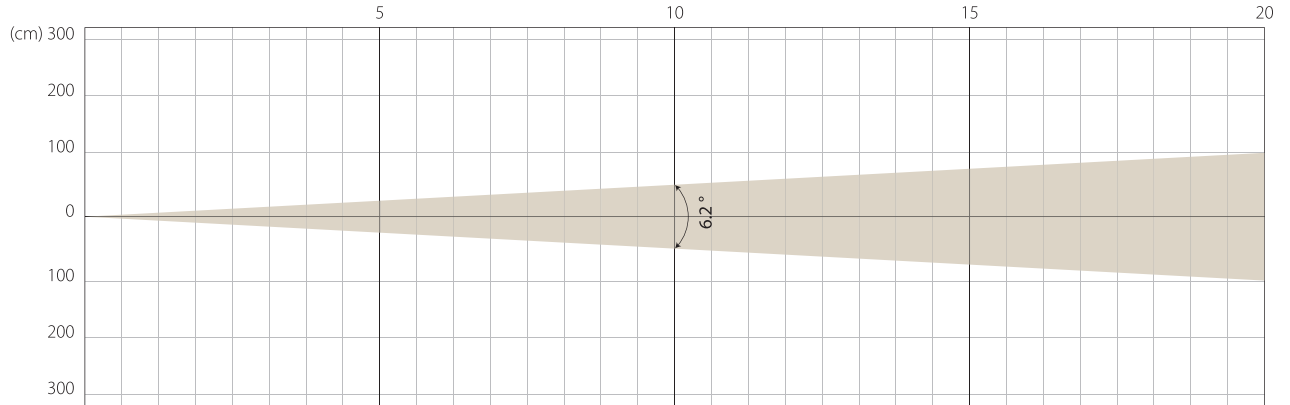
Distance (m)	5		10		15		20	
unit	lux	diameter	lux	diameter	lux	diameter	lux	diameter
White	1371	7,67	343	15,35	152	23,02	86	30,69

# SUPER SILENCE MODE

NATIVE CRI GREATER THAN 70

MIN ZOOM

## Beam Opening

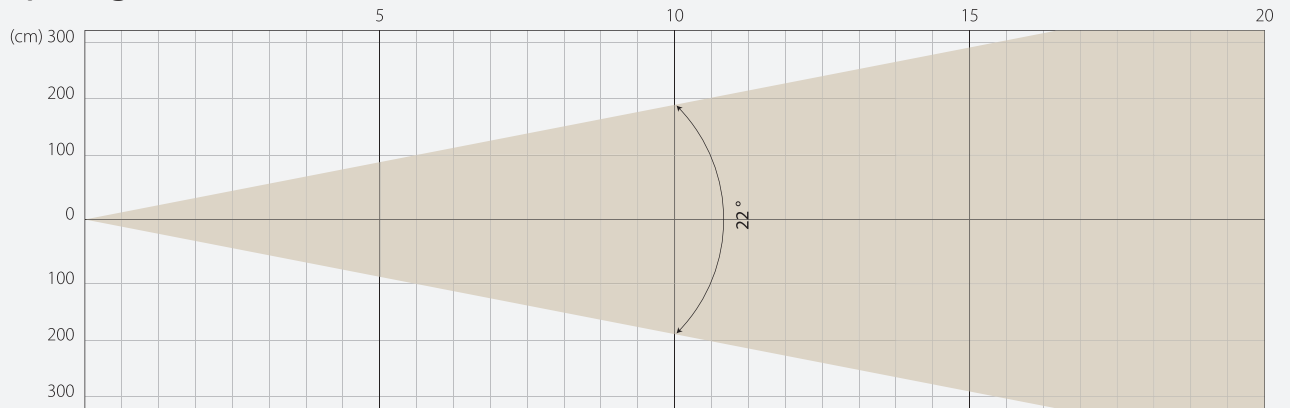


## Intensity

Distance (m)	5		10		15		20	
	lux	diameter	lux	diameter	lux	diameter	lux	diameter
White	45359	0,54	11340	1,08	5040	1,62	2835	2,17

MIDDLE ZOOM

## Beam Opening

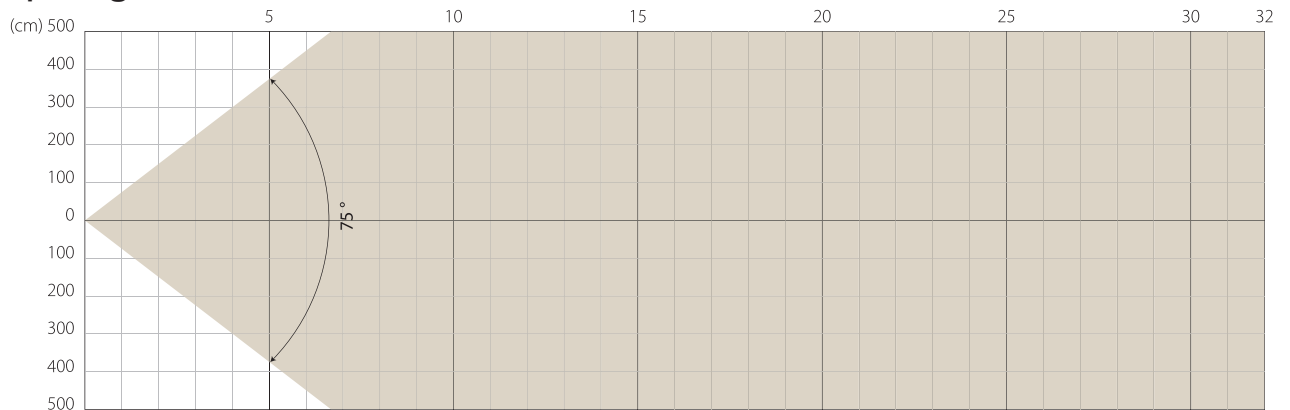


## Intensity

Distance (m)	5		10		15		20	
	lux	diameter	lux	diameter	lux	diameter	lux	diameter
White	6175	1,94	1544	3,89	686	5,83	386	7,78

MAX ZOOM

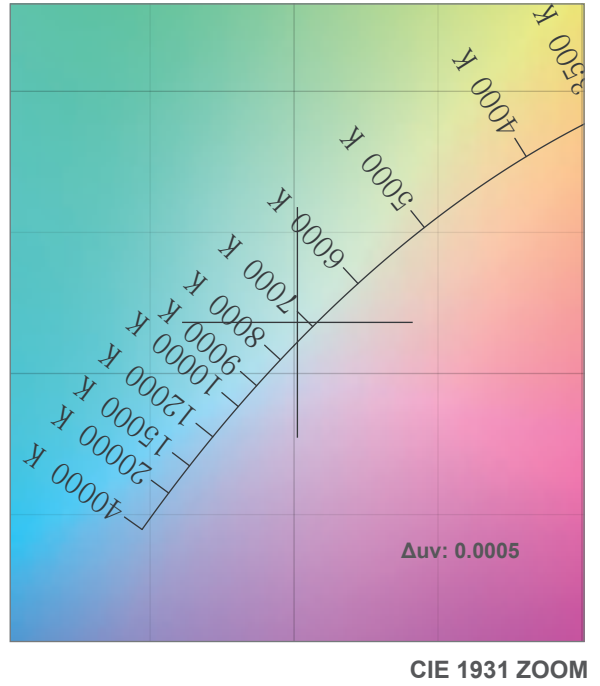
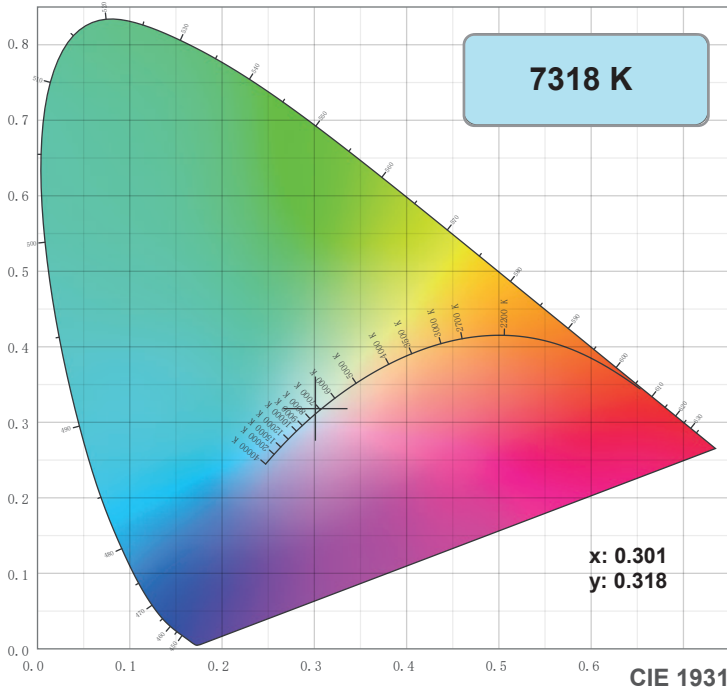
## Beam Opening



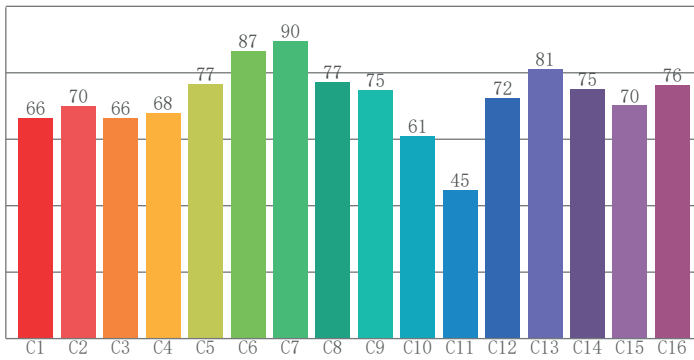
## Intensity

Distance (m)	5		10		15		20	
	lux	diameter	lux	diameter	lux	diameter	lux	diameter
White	816	7,67	204	15,35	91	23,02	51	30,69

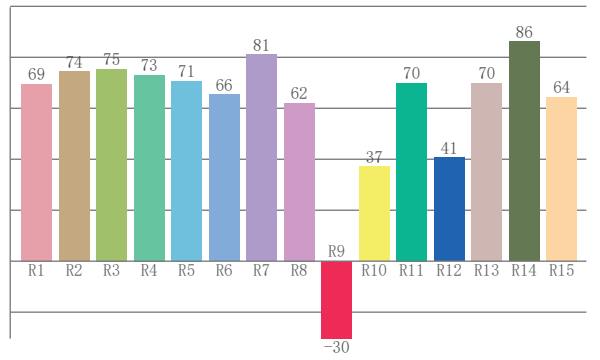
# COLOR DETAILS



**TM-30: 72.2**



**CRI: 71.5 (R1-R8)**



**CRI R values, only R1-R8 are used to calculate final CRI value**

R1	R2	R3	R4	R5	R6	R7	R8	R9	R10	R11	R12	R13	R14	R15
69.5	74.5	75.4	73.1	70.7	65.5	81.1	62.1	-30.4	37.1	70.0	40.7	70.0	86.1	64.4

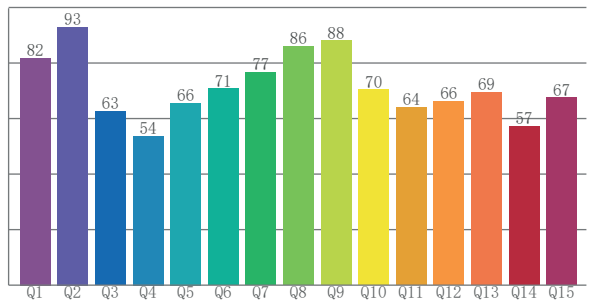
**TM30 C values, 16 binned values out of total of 99 C values**

C1	C2	C3	C4	C5	C6	C7	C8	C9	C10	C11	C12	C13	C14	C15	C16
66.5	70.0	66.4	67.8	76.6	86.6	89.6	77.2	74.7	61.1	44.7	72.4	81.0	75.0	70.1	76.4

**CQS Q values**

Q1	Q2	Q3	Q4	Q5	Q6	Q7	Q8	Q9	Q10	Q11	Q12	Q13	Q14	Q15
81.9	93.0	62.5	53.7	65.6	70.8	76.7	85.9	88.0	70.3	64.0	66.2	69.4	57.1	67.5

**CQS: 69.4**



## Color parameters

Color temperature	Color rendering index	Red component	Color fidelity	Color gamut	Color quality scale	Color coordinate cie 1931	Color coordinate cie 1931	Color coordinate	Color coordinate	Color deviation from black body
CCT	CRI	CRI R9	TM30 Rf	TM30 Rg	CQS	x	y	u	v	Δuv
7318 K	71.5	-30.4	72.2	92.8	69.4	0.301	0.318	0.194	0.307	0.0005

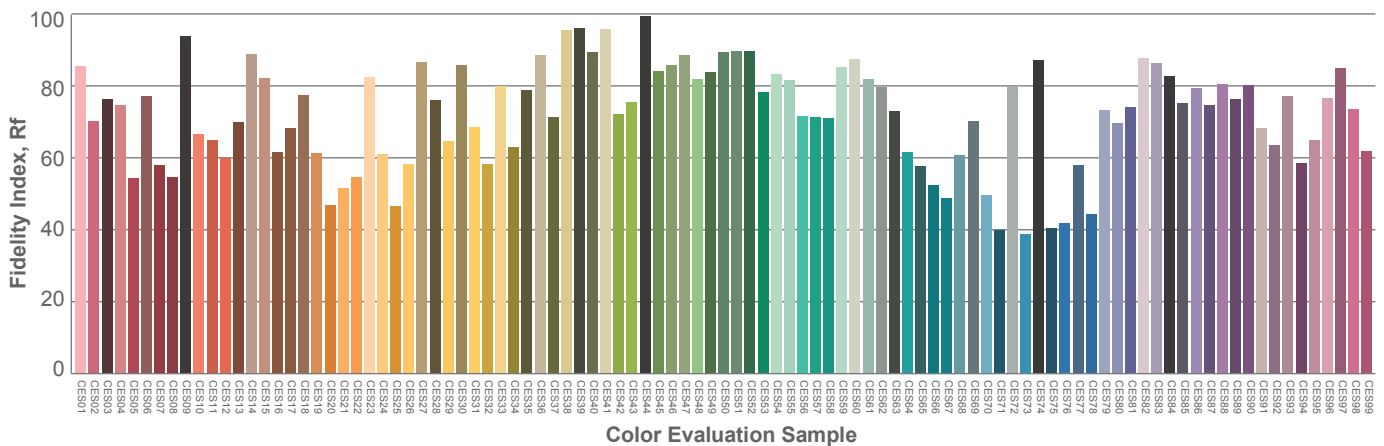
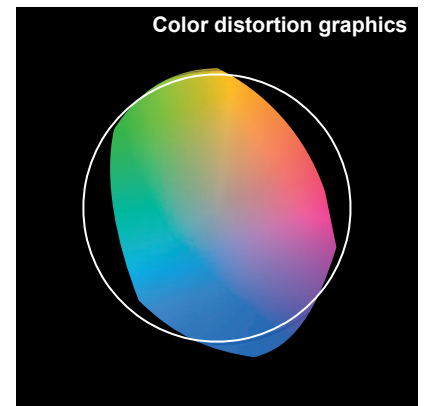
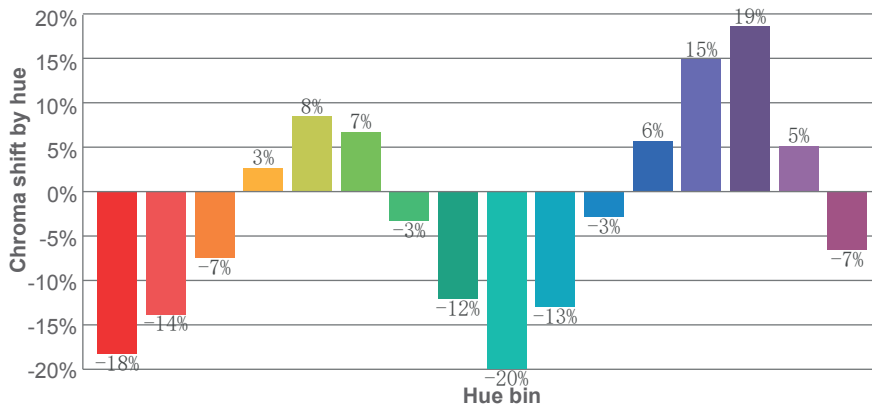
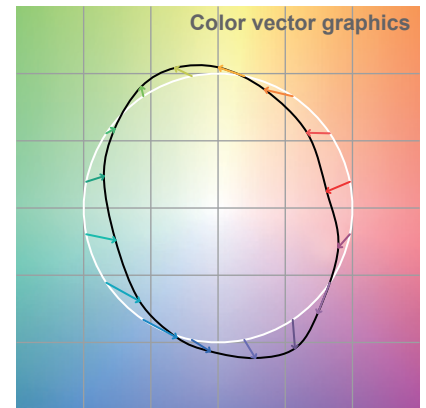
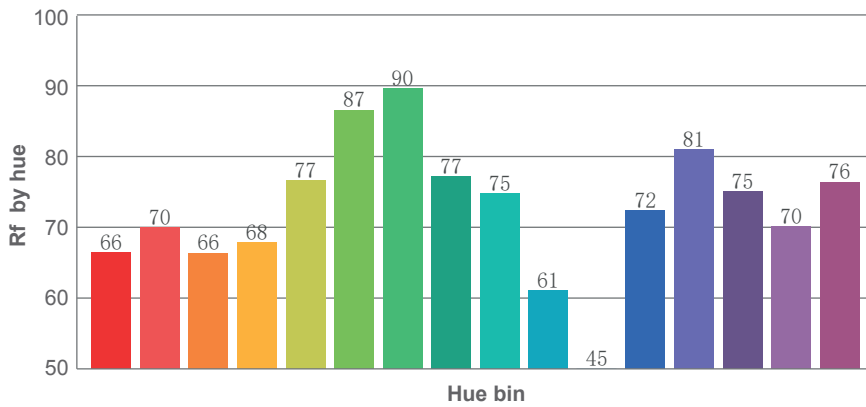
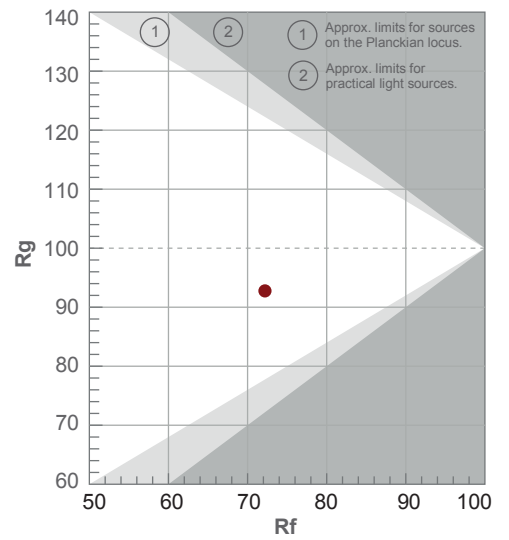


# TM-30 DETAILS

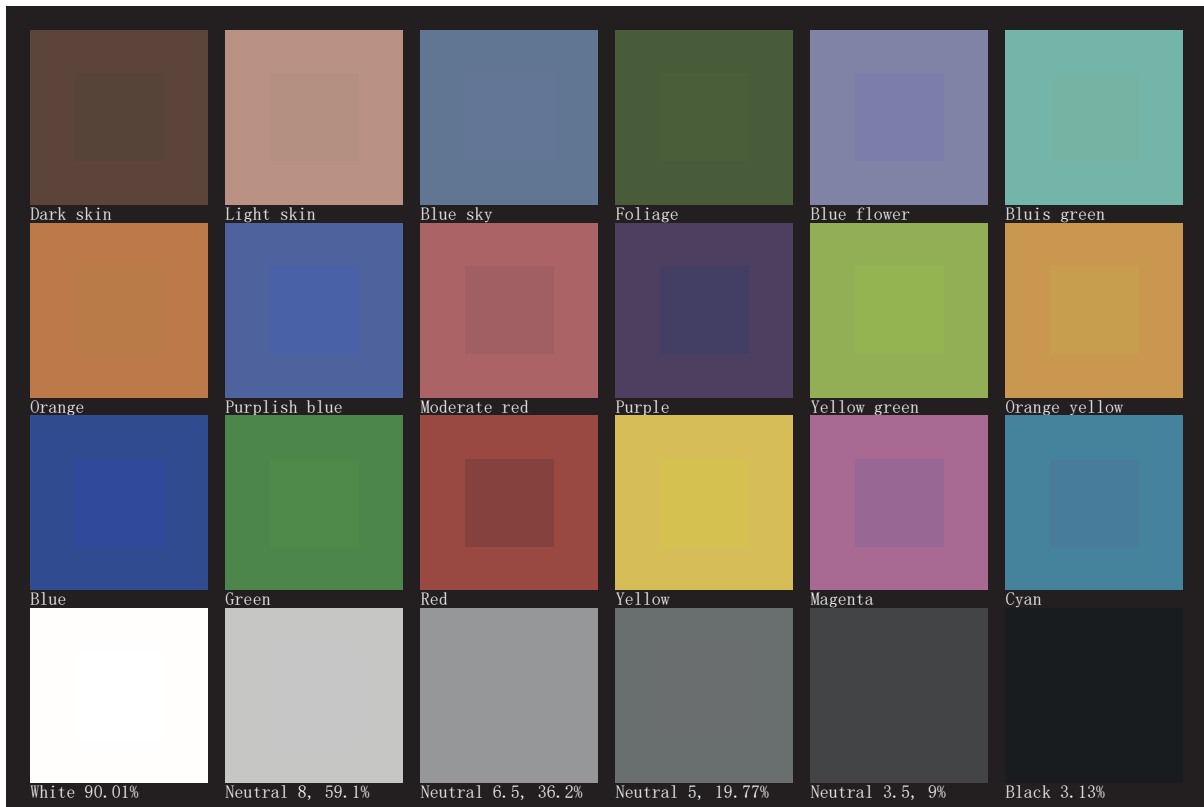
**Rf 72.2**  
Fidelity index Rf

**Rg 92.8**  
Gamut index Rg

Hue Bin	R <sub>f</sub>	Shifts (%)	
		Chroma	Hue
1	66	-18%	-4%
2	70	-14%	10%
3	66	-7%	20%
4	68	3%	20%
5	77	8%	11%
6	87	7%	-3%
7	90	-3%	-6%
8	77	-12%	-7%
9	75	-20%	9%
10	61	-13%	25%
11	45	-3%	28%
12	72	6%	15%
13	81	15%	5%
14	75	19%	-10%
15	70	5%	-24%
16	76	-7%	-11%



# TLCI 49







**AYRTON**

Digital Lighting